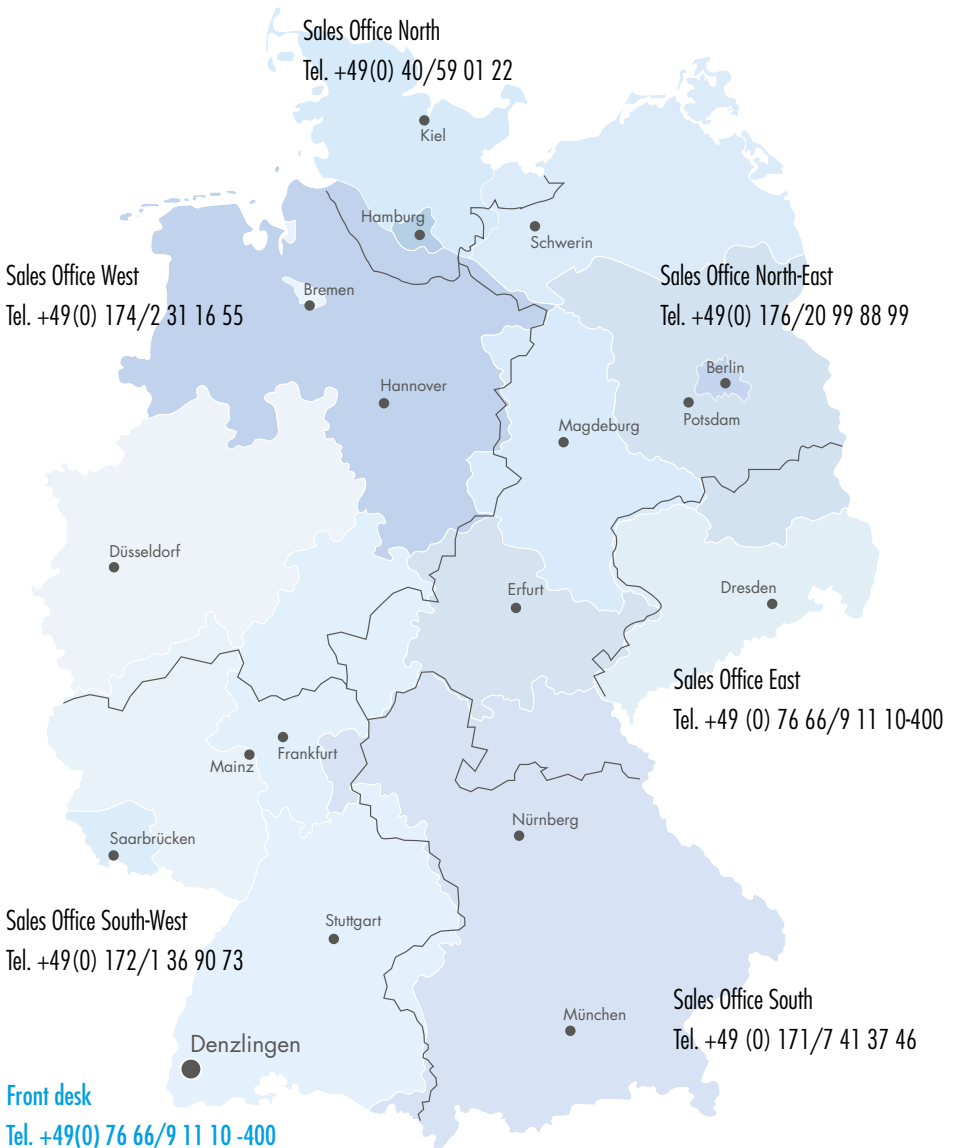


SOLUTIONS FOR HEATING AND DRINKING WATER SYSTEMS



DISTRIBUTION PARTNERS

Germany



Head of Sales international

Tel. +49(0)1 71/7 37 25 35

HUMMEL - reliable connection solutions for heating and sanitary

Heating systems

- // Connection technology
- // Radiator connections
- // Venting / Outflow

Drinking water systems

- // Steel pipe adapters
- // Compression fittings
- // Connecting parts + nipples

TABLE OF CONTENTS

Service 2

Contacts, Legend, etc.



Case assortment 12

Emergency service case 12

Steel pipe adapter case 14



Drinking water 17

Steel pipe adapters 18

Compression fittings 19

Connectors and nipples 24



Connection technology 29

Steel pipe adapters 30

Compression fittings 35

Connectors and nipples 40



Radiator connections 51

Diverters 52

Special connections 57

Flexible connections 65

Connection fittings 67

Thermostatic valves 78

Threaded-joint radiator returns 85

Thermostatic heads 89

Design fittings 90



Outflow 101

Outflow valves 102

FE valves 105

SFE valves 106

TABLE OF CONTENTS



Venting	113
Air bleeder valves	114
Automatic ventings	121



Plugs and reductions	125
Reductions	126
Plugs	128



Accessories	139
Collars	140
Air bleed key	143
Tools	145
Small parts	146

Spare Parts	155
--------------------	------------

Index	158
numeric, alphabetical	

Technical Information	166
DIN regulations, guidelines, etc.	

LEGEND

Abbreviations and Certificats

Abbreviations technical features

A1 [mm]	Length measure 1 in mm
A2 [mm]	Length measure 2 in mm
AG1	Length dimension 1
AG2	Length dimension 2
AG3	Length dimension 3
AG4	Length dimension 4
AM [mm]	Axial dimension in mm
AT1	Connection size 1
AT2	Connection size 2
AT3	Connection size 3
AT4	Connection size 4
B [mm]	Width in mm
GL1 [mm]	Thread length 1 in mm
GL2 [mm]	Thread length 2 in mm
H [mm]	Height in mm
Lv [mm]	Variable length in mm
L [mm]	Length in mm
R [mm]	Pipe dimension in mm
SW1 [mm]	Wrench size 1 in mm
SW2 [mm]	Wrench size 2 in mm
SW3 [mm]	Wrench size 3 in mm
SW4 [mm]	Wrench size 4 in mm
SW5 [mm]	Wrench size 5 in mm

Exemption from liability

Illustrations are non-binding, in particular with regard to the version, size and colour of the products. We reserve the right to make technical changes, as well as changes to dimensions and design. We reserve the right, without previous notice, to make appropriate and reasonable changes that serve technical progress, even to products that have already been ordered. The details and technical data contained in the catalogues, brochures and other written documentation, as well as on electronic storage media, or, for example, in drawings, sketches and proposals, should be checked by engineers or ordering parties. No claims whatsoever can be raised against HUMMEL AG because of these documents or from additional consulting services. Errors and omissions in this catalogue are the result of printer's errors and give no entitlement to reductions or anything else. No responsibility is taken for the correctness of this information.

Imprint

Graphics & Layout: HUMMEL AG, Marketing, Lise-Meitner-Str. 2, 79211 Denzlingen, Tel. +49 (0) 76 66 / 9 11 10-0, info@hummel.com

Certificates



DVGW The German Technical and Scientific and Water Industry (DVGW) certifies the safety according to DIN 1988 in water supply



UBA All materials used comply with the hygienic specifications of the Federal Environment Agency (UBA)



H & T These products can be used in both heating and drinking water systems.



ÜA The ÜA mark (conformity Austria) is a legally prescribed proof for building products

INSTALLATION VIDEOS

SpeedFIX compression fitting

With HUMMEL compression fittings, pipes and fittings can be securely connected in just three steps: Attach, tighten, fix.



Diverters

When changing radiators, there is always the problem of a reversed flow and return. Diverters ensure the correct direction of flow.



Steel pipe adapters

Steel pipe adapters are ideal for mounting radiators or other fittings to existing connections: no welding, no thread cutting.



Flexible radiator connections

This popular problem solver is always used when the pipe spacing to the new radiator no longer fits. For installation ranges from 65 to 410 millimetres.



Emergency service case

With the emergency service case, plumbers have compression fittings for all common pipe types on board and are thus prepared for all eventualities.



Steel pipe adapter for drinking water systems

This steel pipe adapter is DVGW-certified and thus meets all hygienic requirements for safe use in drinking water systems.



For heating and drinking water systems

Connection solutions from HUMMEL AG can be used in both heating and drinking water systems. The products are made of UBA-compliant materials and thus fulfil relevant hygiene requirements of the Federal Environment Agency. The range includes compression fittings, connection parts, nipples and steel pipe adapters.

One solution for two systems – this principle brings numerous advantages:

- // More safety for the craftsman
- // No risk of confusion on the construction site
- // Simple and uncomplicated procurement
- // Lean and clear stock-keeping
- // Simple assembly without special tools in both systems



These problem solvers belong in every service van

Every tradesman knows the situation: emergency service call! After a pipe burst, a leak must be sealed; pipe type and pipe dimension are not known. If you have HUMMEL problem solvers in your service van in such situations, you can provide a quick solution. With compression fittings and connection parts, HUMMEL has the right solution in its range for almost every type of pipe.

However, renovations can also pose problems. Pipe transitions, height compensations or different distances are common challenges for all renovators.

Differing distances

- // Excenter for connection fittings
- // Flexible radiator connections
- // Reductions



Different pipe connections

- // Compression fittings MKV-K, MKV-M, SpeedFIX
- // For plastic, composite and metal pipes
- // Connecting parts and nipples



Height compensation

- // Cone adapters
- // Telescopic connections
- // Extensions for connection fittings



Interchanged flow and return

- // Deflection pieces
- // Straight-through or corner form
- // For one and two pipe systems



MKV-K: 28 new renovation sets

These renovation sets belong in every service vehicle! They offer the right bolting solution for more than 70 different plastic and metal composite pipes. All common pipe diameters and wall and wall thicknesses are covered.

The way to the right solution is very simple. The specially developed, free MKV app is the ideal product finder: measure the pipe, enter the values, display the appropriate set, call up the data sheet and forward it if necessary.

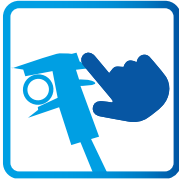
The new fitting sets are specially designed to meet the needs of tradesmen in renovation work. The resealable packaging contains 10 multi-range compression fittings plus a suitable calibration tool. This pre-treats the pipes so that a secure and permanently reliable connection is guaranteed.



MKV-K Finder: The app for all cases



Quick and easy to find the right connection solution. It's so easy with the HUMMEL app: measure the pipe, enter the values, display the suitable connection solution and, if required, send it straight to your preferred dealer. The great thing about it: it works from anywhere. Whether on the construction site, in the service van, in the workshop or in the office.



Step 1: Measure

Simply measure the outside and inside diameter of the pipe to be processed with a caliper gauge



Step 2: Enter values

Open the HUMMEL app on your smartphone or PC. Transfer values to the input mask



Step 3: Display results

At the touch of a button, the desired solution appears with all the necessary technical information

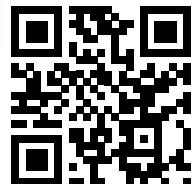


Step 3: Display results

The technical data sheet is simply sent by e-mail to the preferred dealer



easy product selection
with the MKV-App



Prepared for all eventualities

Emergency service in the plumbing, heating and air-conditioning trade can quickly become an exceptional situation. A burst pipe at the weekend or on a public holiday, a leak in a rare type of pipe, damage in a hard-to-reach place - every tradesman knows these unforeseeable challenges.

It's good if you can then rely on the equipment in the service van. An indispensable component here: the HUMMEL emergency service case. This means that the tradesman always has the right compression fitting to hand. The range covers all common pipe sizes and types and thus always offers a quick solution for damaged areas.

The special feature here is that the compression fittings and connection parts can be used in heating systems as well as in drinking water systems. The products are certified according to the requirements of the Federal Environment Agency and thus fulfil all hygienic requirements for use in drinking water systems.

More safety in emergency service: a suitcase full of solutions

- // For heating and drinking water systems
- // MKV-K for plastic and metal composite pipes
- // MKV-M for copper, precision steel and stainless steel pipes
- // Simple installation without special tools
- // Suitable even for hard-to-reach areas



to the product video

Emergency service case

Item-No 2 810 0320 13



Article	AG1	AG2	Quantity	Item-No
Coupling nipple MKV	G 3/4	G 3/4	2 pieces	2 253 3434 00
Coupling nipple MKV	G 3/4	G 3/4	2 pieces	2 253 3434 01
Reduction piece MKV	G 1/2	G 3/4	2 pieces	2 254 1244 01
Reduction piece	G 5/8	G 3/4	2 pieces	2 254 5834 01
Connecting nipple	G 3/4	G 1/2	2 pieces	2 554 1234 00
Connecting nipple	G 3/4	G 1/2	2 pieces	2 554 1234 01
Connecting nipple	G 3/4	G 3/4	2 pieces	2 554 3434 00
Sealing cap	G 3/4	—	2 sets	2 810 0279 13
Compression fitting MKV-M	G 3/4	10 – 12 mm	1 set	2 855 0001 01
Compression fitting MKV-M	G 3/4	13 – 15 mm	1 set	2 855 0002 01
Compression fitting MKV-M	G 3/4	16 – 18 mm	1 set	2 855 0003 01
Compression fitting MKV-K	G 3/4	12 x 2 mm	1 set	2 862 1202 01
Compression fitting MKV-K	G 3/4	14 x 2 mm	1 set	2 862 1402 01
Compression fitting MKV-K	G 3/4	16 x 2 mm	1 set	2 862 1602 01
Compression fitting MKV-K	G 3/4	16 x 2.25 mm	1 set	2 862 1622 01
Compression fitting MKV-K	G 3/4	17 x 2 mm	1 set	2 862 1702 01
Compression fitting MKV-K	G 3/4	17 x 2.5 mm	1 set	2 862 1725 01
Compression fitting MKV-K	G 3/4	18 x 2 mm	1 set	2 862 1802 01
Compression fitting MKV-K	G 3/4	20 x 2 mm	1 set	2 862 2002 01
Compression fitting MKV-K	G 3/4	20 x 2.5 mm	1 set	2 862 2025 01
Compression fitting MKV-K	G 3/4	20 x 2.9 mm	1 set	2 862 2029 01

Service case Steel pipe adapter: simple, safe, clean

When replacing a radiator or installing a fitting, no one has to weld or cut threads any more. With the right steel pipe adapter, installation is simple, safe and above all: a clean affair. The steel pipe adapter is simply pushed onto the dirt-free pipe and tightened. This works even in the tightest spaces and under difficult installation conditions.

The specially designed HUMMEL service case is clearly equipped with many variants and sizes of steel pipe adapters. There are versions for fittings with Eurocone, internal or external thread. This means that the fitter always has the required version to hand and is prepared for any installation situation on site.

This service case saves time and long journeys

- // 11 steel tube adapter variants
- // All installation solutions just a handle away
- // High retention forces due to EPDM seal plus stainless steel claw
- // Maximum operating pressure: 10 bar
- // Operating temperature in heating systems: up to 120 °Celsius



to the product video

Steel pipe adapter case

Item-No 2 810 0320 20

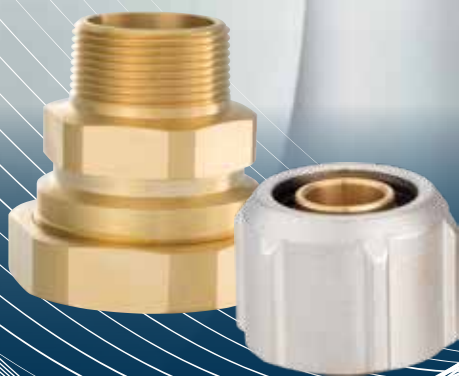


Article	AG1	AG2	Quantity	Item-No
Steel pipe adapters with Eurocone internal thread	G 3/4	1/2	2 pieces	2 353 1234 01
Steel pipe adapters with Eurocone internal thread	G 3/4	3/8	2 pieces	2 353 3834 01
Steel pipe adapter with Eurocone external thread	G 3/4	1/2	2 pieces	2 354 1234 01
Steel pipe adapter with Eurocone external thread	G 3/4	3/4	2 pieces	2 354 3434 01
Steel pipe adapter with Eurocone external thread	G 3/4	3/8	2 pieces	2 354 3834 01
Steel pipe adapters with external thread	R 1	1	2 pieces	2 355 1010 01
Steel pipe adapters with external thread	R 1/2	1/2	2 pieces	2 355 1212 01
Steel pipe adapters with external thread	R 3/4	3/4	2 pieces	2 355 3434 01
Steel pipe adapters with external thread	R 1/2	3/8	2 pieces	2 355 3812 01
Steel pipe adapters with internal thread	G 1/2	1/2	2 pieces	2 356 1212 01
Steel pipe adapters with internal thread	G 1/2	3/8	2 pieces	2 356 3812 01



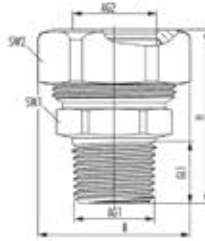
DRINKING WATER

- // Steel pipe adapters
- // Compression fittings
- // Connectors and nipples



DRINKING WATER

Drinking water Steel pipe adapters with external thread



INFO

- // Certified acc. DVGW cold water, Reg.No. DW-8511CU0182
- // Fast and dirt-free assembly
- // No welding and no thread cutting necessary
- // High pressure and temperature resistance
- // Flush-mounted use according to DIN
- // For steel pipes (DIN EN 10255 M/H, DIN EN 10220-1, DIN EN 10240)

TECHNICAL DATA

Material	Brass blank
Material thrust ring	Brass blank
Material moulded seal	EPDM
Material retaining claw	Stainless steel
Max. operating pressure	10 bar
Max. operating temperature ☀	120 °C
Max. operating temperature ❄	95 °C

AG1	AG2	B mm	H mm	GL1 mm	SW1 mm	SW2 mm	Item-No
R 1/2	1/2	39.5	45	16.8	27	36	2 755 1212 00
R 3/4	3/4	50	50	19	34	45	2 755 3434 00
R 1	1	61	56	22	41	55	2 755 1010 00
R 1 1/4	1 1/4	71	69	25	50	65	2 755 5454 00
R 1 1/2	1 1/2	85	80	25	60	80	2 755 6464 00

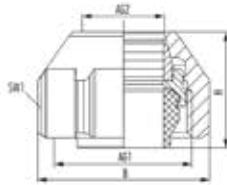


to the assembly instruction



to the product video





INFO

- // Set consists of 2 compression fittings
- // Preassembled and fixed
- // Clamping range 15mm
- // For copper, precision steel or (stainless) steel pipes with a wall thickness ≥ 1 mm (according to DIN EN 1057, DIN EN 10305-2 and DIN EN 10312)
- // Low tightening torque (easy mobility)
- // Suitable for district heating
- // EPDM sealing element
- // Eurocone compatible

TECHNICAL DATA

Material	Nickel-plated brass / Coated brass
Material moulded seal	EPDM
Material clamping ring	Brass blank
Max. operating pressure	10 bar
Max. operating temperature	120 °C
Max. operating temperature	95 °C

AG1	AG2	B mm	H mm	SW1 mm	Colour	Item-No
G 3/4	15 mm	33.2	20.5	30	nickel-plated	2 855 0015 01
G 3/4	15 mm	33.2	20.5	30	chrome	2 855 0015 02
G 3/4	15 mm	33.2	20.5	30	white	2 855 0015 90



to the assembly instruction

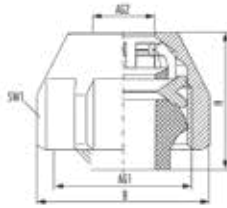


to the product video



DRINKING WATER

Compression fittings MKV-M



INFO

- // Multi-range compression fitting
- // Set consists of 2 compression fittings
- // For copper, precision steel or (stainless) steel pipes with a wall thickness ≥ 1 mm (according to DIN EN 1057, DIN EN 10305-2 and DIN EN 10312)
- // EPDM sealing element
- // Eurocone compatible

TECHNICAL DATA

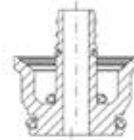
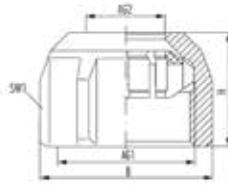
Material	Nickel-plated brass
Material clamping ring	Brass blank
Material moulded seal	EPDM
Tightening torque	40 Nm
Max. operating pressure	10 bar
Max. operating temperature	120 °C
Max. operating temperature	95 °C

AG1	AG2	B mm	H mm	SW1 mm	Item-No
G 3/4	10 – 12 mm	33.2	22	30	2 855 0001 01
G 3/4	13 – 15 mm	33.2	22	30	2 855 0002 01
G 3/4	16 – 18 mm	33.2	22	30	2 855 0003 01



to the assembly instruction





INFO

- // Set consists of 2 compression fittings
- // For plastic or metal composite pipes
- // With integrated plastic clamp insert
- // With support bushings
- // Eurocone compatible

TECHNICAL DATA

Material	Nickel-plated brass
Material clamping ring	PA
Material moulded seal	EPDM
Material support sleeve	Brass blank
Tightening torque	40 Nm
Max. operating pressure	10 bar
Max. operating temperature ☀	120 °C
Max. operating temperature ❄	95 °C

AG1	AG2	B mm	H mm	SW1 mm	Item-No
G 3/4	12 x 2 mm	33.2	24.5	30	2 862 1202 01
G 3/4	14 x 2 mm	33.2	24.5	30	2 862 1402 01
G 3/4	16 x 1.8 mm	33.2	25	30	2 862 1618 01
G 3/4	16 x 2 mm	33.2	25	30	2 862 1602 01
G 3/4	16 x 2.25 mm	33.2	25	30	2 862 1622 01
G 3/4	17 x 2 mm	33.2	25	30	2 862 1702 01
G 3/4	17 x 2.5 mm	33.2	25	30	2 862 1725 01
G 3/4	18 x 2 mm	33.2	25	30	2 862 1802 01
G 3/4	20 x 2 mm	33.2	25	30	2 862 2002 01
G 3/4	20 x 2.5 mm	33.2	25	30	2 862 2025 01
G 3/4	20 x 2.9 mm	33.2	25	30	2 862 2029 01



to the assembly instruction



The right solution for every pipe

Good news for all modernisers and renovators: HUMMEL offers compression fittings for all common pipe types on the market. Gone are the days when tradesmen had to search for suitable connection solutions.

28 renovation sets offer solutions for more than 70 different plastic and metal composite pipes. These are almost all pipe types on the market. These sets are especially aimed at the needs in renovation. The old pipes can be pre-treated with a special calibration tool. This creates the conditions for a perfect and safe connection solution. One set consists of 10 fittings and one calibration tool.

HUMMEL compression fittings make renovation easier:

- // For heating and drinking water systems
- // Simple, dirt-free installation without special tools
- // Space-saving installation especially for difficult environments
- // Suitable solutions also for special sizes

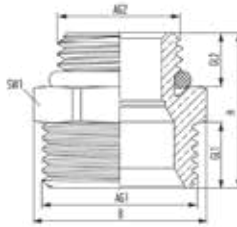




Set-No	AG1	AG2	Item-No
1	G 3/4	9.9 x 1.1 mm / 10 x 1.3 mm / 10.1 x 1.1 mm / 12 x 2.25 mm	28620001 01
2	G 3/4	11.6 x 1.8 mm / 12 x 1.8 mm / 12 x 2 mm / 13 x 2.5 mm	28620002 01
3	G 3/4	11.6 x 1.5 mm / 12 x 1.6 mm / 12 x 1.7 mm	28620003 01
4	G 3/4	14 x 2.6 mm	28620004 01
5	G 3/4	12 x 1.4 mm / 12 x 1.5 mm	28620005 01
6	G 3/4	14 x 2.5 mm	28620006 01
7	G 3/4	12 x 1.1 mm / 12 x 1.2 mm / 12 x 1.25 mm / 12 x 1.3 mm	28620007 01
8	G 3/4	14 x 2.25 mm	28620008 01
9	G 3/4	15 x 2.6 mm / 16 x 3.3 mm	28620009 01
10	G 3/4	12 x 1 mm	28620010 01
11	G 3/4	13 x 1.5 mm / 14 x 2 mm	28620011 01
12	G 3/4	15 x 2.5 mm	28620012 01
13	G 3/4	14 x 1.6 mm / 14 x 1.75 mm	28620013 01
14	G 3/4	16 x 2.7 mm / 16 x 2.75 mm	28620014 01
15	G 3/4	14 x 1.5 mm	28620015 01
16	G 3/4	15 x 2.0 mm / 16.2 x 2.6 mm	28620016 01
17	G 3/4	15 x 1.8 mm / 15.5 x 2 mm / 16 x 2.2 mm / 16 x 2.25 mm / 17 x 2.75 mm / 17 x 2.8 mm	28620017 01
18	G 3/4	14 x 1 mm	28620018 01
19	G 3/4	15 x 1.5 mm / 15.6 x 1.8 mm / 16 x 2 mm / 16.2 x 2.1 mm / 16.7 x 2.4 mm / 17 x 2.5 mm	28620019 01
20	G 3/4	15 x 1.2 mm / 16 x 1.75 mm / 16 x 1.8 mm / 17 x 2.2 mm	28620020 01
21	G 3/4	18 x 2.75 mm	28620021 01
22	G 3/4	15 x 1 mm / 16 x 1.5 mm / 17 x 2 mm	28620022 01
23	G 3/4	18 x 2.5 mm	28620023 01
24	G 3/4	18 x 2 mm / 20 x 2.9 mm	28620024 01
25	G 3/4	18 x 1.75 mm / 20 x 2.8 mm	28620025 01
26	G 3/4	18 x 1.5 mm / 19 x 2 mm / 20 x 2.5 mm / 20.2 x 2.6 mm	28620026 01
27	G 3/4	18 x 1.25 mm / 20 x 2.25 mm / 20 x 2.3 mm	28620027 01
28	G 3/4	18 x 1 mm / 18 x 1.2 mm / 20 x 2 mm	28620028 01

DRINKING WATER



Connector nipple



INFO

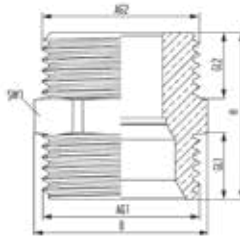
- // For compression fittings
- // For manifolds and fittings
- // O-ring sealing
- // Flush-mounted use according to DIN
- // Eurocone compatible

TECHNICAL DATA

Material	Brass blank
Material moulded seal	EPDM
Max. operating pressure	10 bar
Max. operating temperature 	120 °C
Max. operating temperature 	95 °C

AG1	AG2	L mm	B mm	H mm	GL1 mm	GL2 mm	SW1 mm	Item-No
G 3/4	G 1/2	29	29	26	11	9	26	2 554 1234 00







INFO

- // For compression fittings
- // For manifolds and fittings
- // Transition of pressing systems
- // Flush-mounted use according to DIN
- // Eurocone compatible

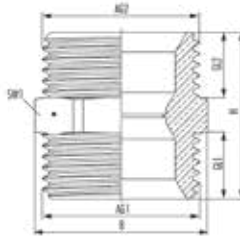
TECHNICAL DATA

Material	Brass blank
Max. operating pressure	10 bar
Max. operating temperature 	120 °C
Max. operating temperature 	95 °C

AG1	AG2	L mm	B mm	H mm	GL1 mm	GL2 mm	SW1 mm	Item-No
G 3/4	G 3/4	29	29	28	11	11	26	2 554 3434 00

DRINKING WATER

Coupling nipple



INFO

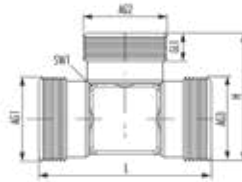
- // For compression fittings
- // Connecting pipe systems
- // Flush-mounted use according to DIN
- // Eurocone compatible

TECHNICAL DATA

Material	Brass blank
Max. operating pressure	10 bar
Max. operating temperature	120 °C
Max. operating temperature	95 °C

AG1	AG2	L mm	B mm	H mm	GL1 mm	GL2 mm	SW1 mm	Item-No
G 3/4	G 3/4	29	29	28	11	11	26	2.253.3434.00





INFO

- // For compression fittings
- // Flush-mounted use according to DIN
- // Eurocone compatible

TECHNICAL DATA

Material	Brass blank
Max. operating pressure	10 bar
Max. operating temperature	120 °C
Max. operating temperature	95 °C

AG1	AG2	AG3	L mm	B mm	H mm	GL1 mm	SW1 mm	Item-No
G 3/4	G 3/4	G 3/4	54	26	40	9	22	2 253 3495 00



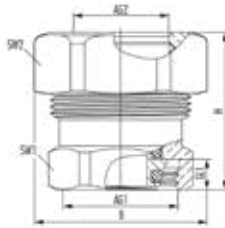
CONNECTION TECHNOLOGY

- // Steel pipe adapters
- // Compression fittings
- // Connectors and nipples
- // Reductions
- // Coupling angles



CONNECTION TECHNOLOGY

Steel pipe adapters with Eurocone internal thread



INFO

- // Fast and dirt-free assembly
- // No welding and no thread cutting necessary
- // Ideal for renovations and refurbishments
- // High pressure and temperature resistance
- // Flush-mounted use according to DIN
- // For steel pipes (DIN EN 10255 M/H, DIN EN 10220-1, DIN EN 10240)
- // For boiling pipes (DIN EN 10216-1, DIN EN 10217-1)
- // Eurocone compatible

TECHNICAL DATA

Material	Nickel-plated brass
Material thrust ring	Brass blank
Material moulded seal	EPDM
Material retaining claw	Stainless steel
Max. operating pressure	10 bar
Max. operating temperature	120 °C

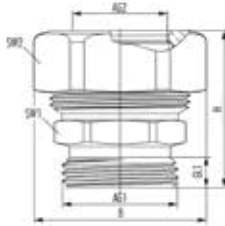
AG1	AG2	B mm	H mm	GL1 mm	SW1 mm	SW2 mm	Item-No
G 3/4	3/8	33	34	7	30	30	2 353 3834 01
G 3/4	1/2	39.5	36	7	30	36	2 353 1234 01



to the assembly instruction



to the product video



INFO

- // Fast and dirt-free assembly
- // No welding and no thread cutting necessary
- // Ideal for renovations and refurbishments
- // High pressure and temperature resistance
- // Flush-mounted use according to DIN
- // For steel pipes (DIN EN 10255 M/H, DIN EN 10220-1, DIN EN 10240)
- // For boiling pipes (DIN EN 10216-1, DIN EN 10217-1)
- // Eurocone compatible

TECHNICAL DATA

Material	Nickel-plated brass
Material thrust ring	Brass blank
Material moulded seal	EPDM
Material retaining claw	Stainless steel
Max. operating pressure	10 bar
Max. operating temperature	120 °C

AG1	AG2	B mm	H mm	GL1 mm	SW1 mm	SW2 mm	Item-No
G 3/4	3/8	33	34	9.5	27	30	2 354 3834 01
G 3/4	1/2	39.5	36	9.5	27	36	2 354 1234 01
G 3/4	3/4	50	41	9.5	34	45	2 354 3434 01



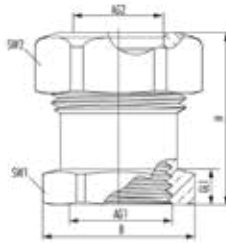
to the assembly instruction



to the product video

CONNECTION TECHNOLOGY

Steel pipe adapters with internal thread



INFO

- // Fast and dirt-free assembly
- // No welding and no thread cutting necessary
- // Ideal for renovations and refurbishments
- // High pressure and temperature resistance
- // Flush-mounted use according to DIN
- // For steel pipes (DIN EN 10255 M/H, DIN EN 10220-1, DIN EN 10240)
- // For boiling pipes (DIN EN 10216-1, DIN EN 10217-1)

TECHNICAL DATA

Material	Nickel-plated brass
Material thrust ring	Brass blank
Material moulded seal	EPDM
Material retaining claw	Stainless steel
Max. operating pressure	10 bar
Max. operating temperature	120 °C

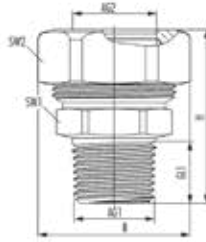
AG1	AG2	B mm	H mm	GL1 mm	SW1 mm	SW2 mm	Item-No
G 1/2	3/8	33	34	10	27	30	2.356.381.2.01
G 1/2	1/2	39.5	36	10	27	36	2.356.121.2.01



to the assembly instruction



to the product video



INFO

- // Fast and dirt-free assembly
- // No welding and no thread cutting necessary
- // Ideal for renovations and refurbishments
- // High pressure and temperature resistance
- // Flush-mounted use according to DIN
- // For steel pipes (DIN EN 10255 M/H, DIN EN 10220-1, DIN EN 10240)
- // For boiling pipes (DIN EN 10216-1, DIN EN 10217-1)

TECHNICAL DATA

Material	Nickel-plated brass
Material thrust ring	Brass blank
Material moulded seal	EPDM
Material retaining claw	Stainless steel
Max. operating pressure	10 bar
Max. operating temperature	120 °C

AG1	AG2	B mm	H mm	GL1 mm	SW1 mm	SW2 mm	Item-No
R 3/8	3/8	33	39	13.2	24	30	2 355 3838 01
R 1/2	3/8	33	42	16.8	24	30	2 355 3812 01
R 1/2	1/2	39.5	45	16.8	27	36	2 355 1212 01
R 3/4	3/4	50	50	19	34	45	2 355 3434 01
R 1	1	61	56	22	41	55	2 355 1010 01
R 1 1/4	1 1/4	71	69	25	50	65	2 355 5454 01
R 1 1/2	1 1/2	85	80	25	60	80	2 355 6464 01



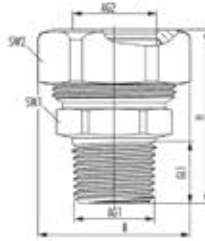
to the assembly instruction



to the product video

CONNECTION TECHNOLOGY

Drinking water Steel pipe adapters with external thread



INFO

- // Certified acc. DVGW cold water, Reg.No. DW-8511CU0182
- // Fast and dirt-free assembly
- // No welding and no thread cutting necessary
- // High pressure and temperature resistance
- // Flush-mounted use according to DIN
- // For steel pipes (DIN EN 10255 M/H, DIN EN 10220-1, DIN EN 10240)

TECHNICAL DATA

Material	Brass blank
Material thrust ring	Brass blank
Material moulded seal	EPDM
Material retaining claw	Stainless steel
Max. operating pressure	10 bar
Max. operating temperature ☀	120 °C
Max. operating temperature ❄	95 °C

AG1	AG2	B mm	H mm	GL1 mm	SW1 mm	SW2 mm	Item-No
R 1/2	1/2	39.5	45	16.8	27	36	2755 1212 00
R 3/4	3/4	50	50	19	34	45	2755 3434 00
R 1	1	61	56	22	41	55	2755 1010 00
R 1 1/4	1 1/4	71	69	25	50	65	2755 5454 00
R 1 1/2	1 1/2	85	80	25	60	80	2755 6464 00

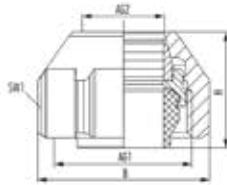


to the assembly instruction



to the product video





INFO

- // Set consists of 2 compression fittings
- // Preassembled and fixed
- // Clamping range 15mm
- // For copper, precision steel or (stainless) steel pipes with a wall thickness ≥ 1 mm (according to DIN EN 1057, DIN EN 10305-2 and DIN EN 10312)
- // Low tightening torque (easy mobility)
- // Suitable for district heating
- // EPDM sealing element
- // Eurocone compatible

TECHNICAL DATA

Material	Nickel-plated brass / Coated brass
Material moulded seal	EPDM
Material clamping ring	Brass blank
Max. operating pressure	10 bar
Max. operating temperature	120 °C
Max. operating temperature	95 °C

AG1	AG2	B mm	H mm	SW1 mm	Colour	Item-No
G 3/4	15 mm	33.2	20.5	30	nickel-plated	2 855 0015 01
G 3/4	15 mm	33.2	20.5	30	chrome	2 855 0015 02
G 3/4	15 mm	33.2	20.5	30	white	2 855 0015 90



to the assembly instruction

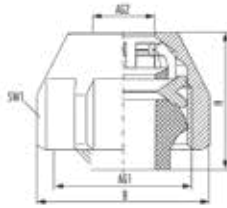


to the product video



CONNECTION TECHNOLOGY

Compression fittings MKV-M



INFO

- // Multi-range compression fitting
- // Set consists of 2 compression fittings
- // For copper, precision steel or (stainless) steel pipes with a wall thickness ≥ 1 mm (according to DIN EN 1057, DIN EN 10305-2 and DIN EN 10312)
- // EPDM sealing element
- // Eurocone compatible

TECHNICAL DATA

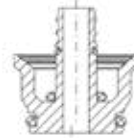
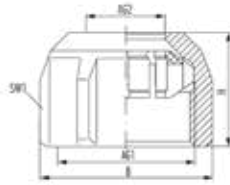
Material	Nickel-plated brass
Material clamping ring	Brass blank
Material moulded seal	EPDM
Tightening torque	40 Nm
Max. operating pressure	10 bar
Max. operating temperature	120 °C
Max. operating temperature	95 °C

AG1	AG2	B mm	H mm	SW1 mm	Item-No
G 3/4	10 – 12 mm	33.2	22	30	2 855 0001 01
G 3/4	13 – 15 mm	33.2	22	30	2 855 0002 01
G 3/4	16 – 18 mm	33.2	22	30	2 855 0003 01



to the assembly instruction







INFO

- // Set consists of 2 compression fittings
- // For plastic or metal composite pipes
- // With integrated plastic clamp insert
- // With support bushings
- // Eurocone compatible

TECHNICAL DATA

Material	Nickel-plated brass
Material clamping ring	PA
Material moulded seal	EPDM
Material support sleeve	Brass blank
Tightening torque	40 Nm
Max. operating pressure	10 bar
Max. operating temperature 	120 °C
Max. operating temperature 	95 °C

AG1	AG2	B mm	H mm	SW1 mm	Item-No
G 3/4	12 x 2 mm	33.2	24.5	30	2 862 1202 01
G 3/4	14 x 2 mm	33.2	24.5	30	2 862 1402 01
G 3/4	16 x 1.8 mm	33.2	25	30	2 862 1618 01
G 3/4	16 x 2 mm	33.2	25	30	2 862 1602 01
G 3/4	16 x 2.25 mm	33.2	25	30	2 862 1622 01
G 3/4	17 x 2 mm	33.2	25	30	2 862 1702 01
G 3/4	17 x 2.5 mm	33.2	25	30	2 862 1725 01
G 3/4	18 x 2 mm	33.2	25	30	2 862 1802 01
G 3/4	20 x 2 mm	33.2	25	30	2 862 2002 01
G 3/4	20 x 2.5 mm	33.2	25	30	2 862 2025 01
G 3/4	20 x 2.9 mm	33.2	25	30	2 862 2029 01



to the assembly instruction



The right solution for every pipe

Good news for all modernisers and renovators: HUMMEL offers compression fittings for all common pipe types on the market. Gone are the days when tradesmen had to search for suitable connection solutions.

28 renovation sets offer solutions for more than 70 different plastic and metal composite pipes. These are almost all pipe types on the market. These sets are especially aimed at the needs in renovation. The old pipes can be pre-treated with a special calibration tool. This creates the conditions for a perfect and safe connection solution. One set consists of 10 fittings and one calibration tool.

HUMMEL compression fittings make renovation easier:

- // For heating and drinking water systems
- // Simple, dirt-free installation without special tools
- // Space-saving installation especially for difficult environments
- // Suitable solutions also for special sizes

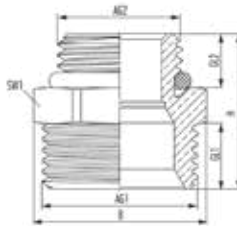




Set-No	AG1	AG2	Item-No
1	G 3/4	9.9 x 1.1 mm / 10 x 1.3 mm / 10.1 x 1.1 mm / 12 x 2.25 mm	28620001 01
2	G 3/4	11.6 x 1.8 mm / 12 x 1.8 mm / 12 x 2 mm / 13 x 2.5 mm	28620002 01
3	G 3/4	11.6 x 1.5 mm / 12 x 1.6 mm / 12 x 1.7 mm	28620003 01
4	G 3/4	14 x 2.6 mm	28620004 01
5	G 3/4	12 x 1.4 mm / 12 x 1.5 mm	28620005 01
6	G 3/4	14 x 2.5 mm	28620006 01
7	G 3/4	12 x 1.1 mm / 12 x 1.2 mm / 12 x 1.25 mm / 12 x 1.3 mm	28620007 01
8	G 3/4	14 x 2.25 mm	28620008 01
9	G 3/4	15 x 2.6 mm / 16 x 3.3 mm	28620009 01
10	G 3/4	12 x 1 mm	28620010 01
11	G 3/4	13 x 1.5 mm / 14 x 2 mm	28620011 01
12	G 3/4	15 x 2.5 mm	28620012 01
13	G 3/4	14 x 1.6 mm / 14 x 1.75 mm	28620013 01
14	G 3/4	16 x 2.7 mm / 16 x 2.75 mm	28620014 01
15	G 3/4	14 x 1.5 mm	28620015 01
16	G 3/4	15 x 2.0 mm / 16.2 x 2.6 mm	28620016 01
17	G 3/4	15 x 1.8 mm / 15.5 x 2 mm / 16 x 2.2 mm / 16 x 2.25 mm / 17 x 2.75 mm / 17 x 2.8 mm	28620017 01
18	G 3/4	14 x 1 mm	28620018 01
19	G 3/4	15 x 1.5 mm / 15.6 x 1.8 mm / 16 x 2 mm / 16.2 x 2.1 mm / 16.7 x 2.4 mm / 17 x 2.5 mm	28620019 01
20	G 3/4	15 x 1.2 mm / 16 x 1.75 mm / 16 x 1.8 mm / 17 x 2.2 mm	28620020 01
21	G 3/4	18 x 2.75 mm	28620021 01
22	G 3/4	15 x 1 mm / 16 x 1.5 mm / 17 x 2 mm	28620022 01
23	G 3/4	18 x 2.5 mm	28620023 01
24	G 3/4	18 x 2 mm / 20 x 2.9 mm	28620024 01
25	G 3/4	18 x 1.75 mm / 20 x 2.8 mm	28620025 01
26	G 3/4	18 x 1.5 mm / 19 x 2 mm / 20 x 2.5 mm / 20.2 x 2.6 mm	28620026 01
27	G 3/4	18 x 1.25 mm / 20 x 2.25 mm / 20 x 2.3 mm	28620027 01
28	G 3/4	18 x 1 mm / 18 x 1.2 mm / 20 x 2 mm	28620028 01

CONNECTION TECHNOLOGY

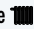

Connector nipple



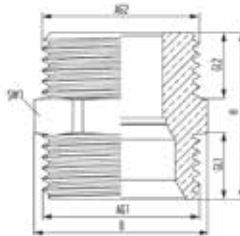
INFO

- // For compression fittings
- // For manifolds and fittings
- // O-ring sealing
- // Flush-mounted use according to DIN
- // Eurocone compatible

TECHNICAL DATA

Material	Nickel-plated brass / Brass blank
Material moulded seal	EPDM
Max. operating pressure	10 bar
Max. operating temperature 	120 °C
Max. operating temperature 	95 °C



AG1	AG2	L mm	B mm	H mm	GL1 mm	GL2 mm	SW1 mm	Material	Item-No
G 3/4	G 1/2	29	29	26	11	9	26	Brass blank	2 554 1234 00
G 3/4	G 1/2	29	29	26	11	9	26	Nickel-plated brass	2 554 1234 01



INFO

- // For compression fittings
- // For manifolds and fittings
- // Transition of pressing systems
- // Flush-mounted use according to DIN
- // Eurocone compatible

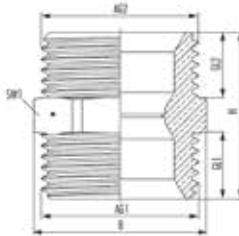
TECHNICAL DATA

Material	Brass blank
Max. operating pressure	10 bar
Max. operating temperature 	120 °C
Max. operating temperature 	95 °C

AG1	AG2	L mm	B mm	H mm	GL1 mm	GL2 mm	SW1 mm	Item-No
G 3/4	G 3/4	29	29	28	11	11	26	2 554 3434 00

CONNECTION TECHNOLOGY



Coupling nipple



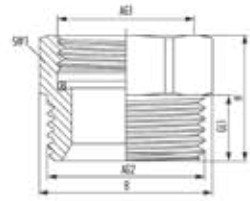
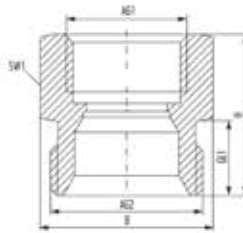
INFO

- // For compression fittings
- // Connecting pipe systems
- // Flush-mounted use according to DIN
- // Eurocone compatible

TECHNICAL DATA

Material	Nickel-plated brass / Brass blank
Max. operating pressure	10 bar
Max. operating temperature 	120 °C
Max. operating temperature 	95 °C

AG1	AG2	L mm	B mm	H mm	GL1 mm	GL2 mm	SW1 mm	Material	Item-No
G 3/4	G 3/4	29	29	28	11	11	26	Brass blank	2.253.3434.00
G 3/4	G 3/4	29	29	28	11	11	26	Nickel-plated brass	2.253.3434.01



left: 2 254 1244 01 | right: 2 254 5834 01

INFO

- // For compression fittings
- // Female thread with seal
- // Eurocone compatible

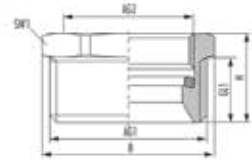
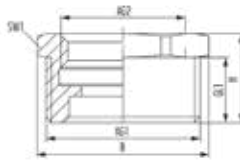
TECHNICAL DATA

Material	Nickel-plated brass
Material moulded seal	Vulcanised fibre / EPDM
Max. operating pressure	10 bar
Max. operating temperature	120 °C

AG1	AG2	B mm	H mm	GL1 mm	SW1 mm	Item-No
G 1/2	G 3/4	30	28	13	27	2 254 1244 01
G 5/8	G 3/4	29	21	11	26	2 254 5834 01

CONNECTION TECHNOLOGY

Reductions with external thread



left: 2 549 3412 01 | right: 2 554 2234 01

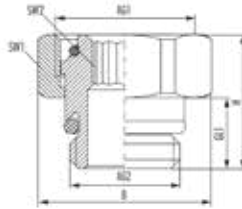
INFO

- // Compact transition for radiator fittings
- // Including sealing
- // Eurocone compatible

TECHNICAL DATA

Material	Nickel-plated brass
Material moulded seal	EPDM
Max. operating pressure	10 bar
Max. operating temperature	120 °C

AG1	AG2	B mm	H mm	GL1 mm	SW1 mm	Item-No
G 3/4	M22 x 1.5	29	15	11	26	2 554 2234 01
G 3/4	G 1/2	29	15	11	26	2 549 3412 01



INFO

- // For manifolds and fittings
- // Male thread with o-ring seal
- // Eurocone compatible

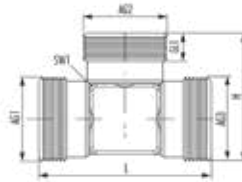
TECHNICAL DATA

Material	Nickel-plated brass
Material moulded seal	EPDM
Max. operating pressure	10 bar
Max. operating temperature	120 °C

AG1	AG2	L mm	B mm	H mm	GL1 mm	SW1 mm	SW2 mm	Item-No
G 3/4	G 1/2	33.5	33.5	25.5	9	30	12	2 908 3412 01

CONNECTION TECHNOLOGY



Coupling T piece



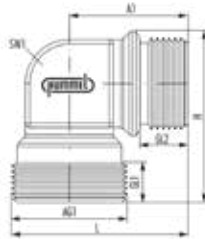
INFO

- // For compression fittings
- // Flush-mounted use according to DIN
- // Eurocone compatible

TECHNICAL DATA

Material	Nickel-plated brass / Brass blank
Max. operating pressure	10 bar
Max. operating temperature 	120 °C
Max. operating temperature 	95 °C

AG1	AG2	AG3	L mm	B mm	GL1 mm	SW1 mm	Material	Item-No
G 3/4	G 3/4	G 3/4	54	26	9	22	Brass blank	2 253 3495 00
G 3/4	G 3/4	G 3/4	54	26	9	22	Nickel-plated brass	2 253 3495 01



INFO

- // For compression fittings
- // Eurocone compatible

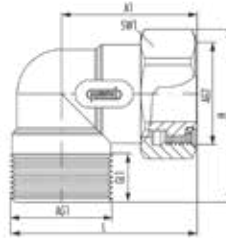
TECHNICAL DATA

Material	Nickel-plated brass
Max. operating pressure	10 bar
Max. operating temperature	120 °C

AG1	AG2	A1 mm	L mm	B mm	H mm	GL1 mm	GL2 mm	SW1 mm	Item-No
G 1/2	G 3/4	27	40	26.4	40	9	9	22	2 253 3492 01
G 3/4	G 3/4	27	40	26.4	40	9	9	22	2 253 3490 01

CONNECTION TECHNOLOGY

Coupling angle with union nut



INFO

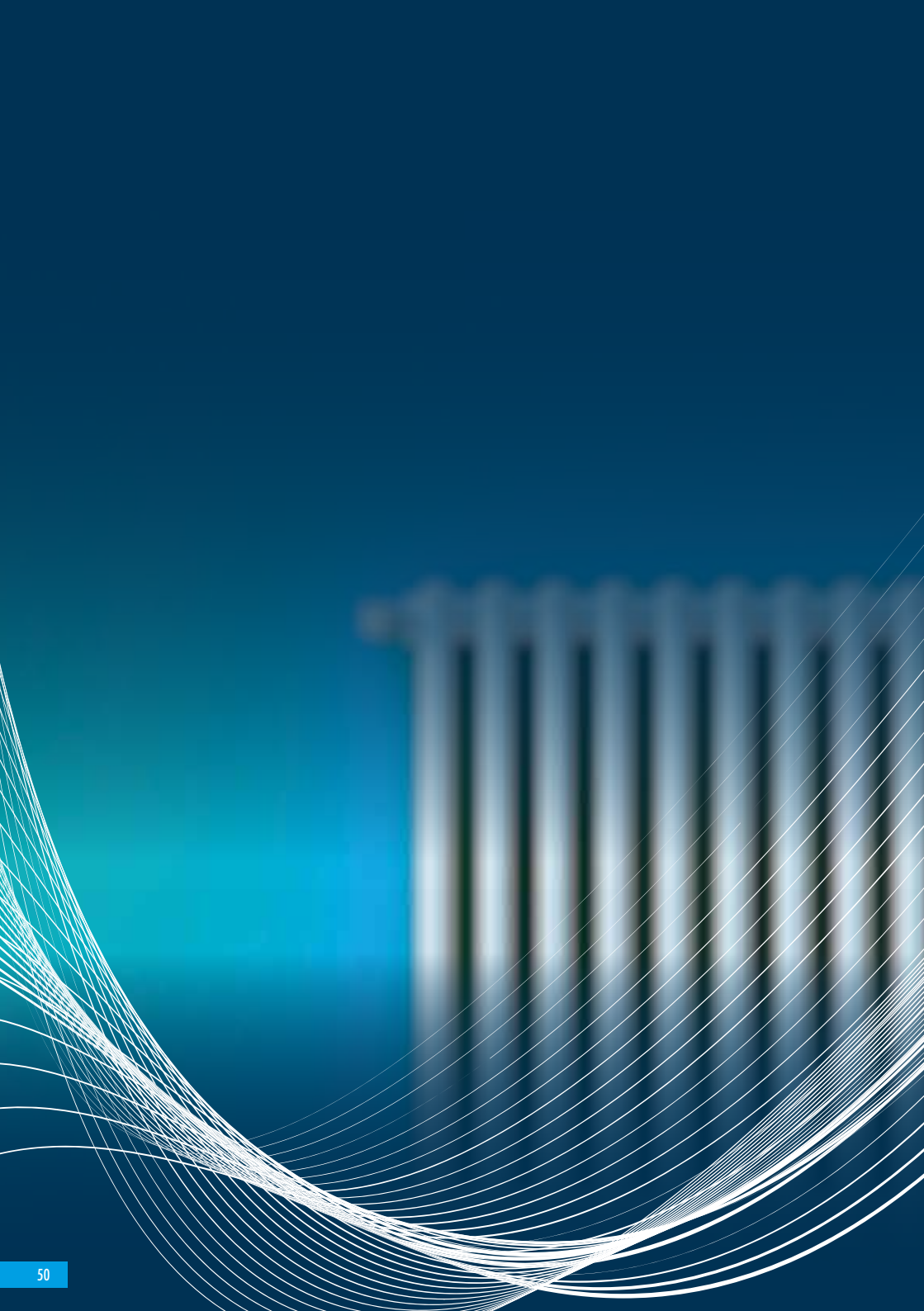
- // For compression fittings
- // Eurocone compatible

TECHNICAL DATA

Material	Nickel-plated brass
Material moulded seal	EPDM
Max. operating pressure	10 bar
Max. operating temperature	120 °C

AG1	AG2	A1 mm	L mm	B mm	H mm	GL1 mm	SW1 mm	Item-No
G 3/4	G 3/4	35.1	48	26	41	12.5	30	2 552 1234 01





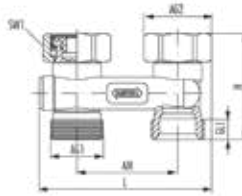
RADIATOR CONNECTIONS

- // Diverters
- // Special connections
- // Flexible connections
- // Connection fittings
- // Thermostatic valves
- // Threaded-joint radiator returns
- // Thermostatic heads
- // Design fittings



RADIATOR CONNECTIONS

Diverter straight type



INFO

- // Version cone: 2 cone inserts
- // Version nipple: 2 x (G 1/2 x G 3/4)
- // For two-pipe systems
- // For interchanged flow and return pipes
- // Without shutoff
- // Eurocone compatible

TECHNICAL DATA

Material	Nickel-plated brass
Material moulded seal	EPDM / Teflon
Max. operating pressure	10 bar
Max. operating temperature	120 °C

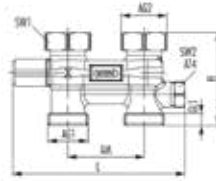
AG1	AG2	AM mm	L mm	H mm	GL1 mm	SW1 mm	Version	Item-No
G 3/4	G 3/4	50	85.5	51	10	30	Cone	2 257 0002 01
G 3/4	G 3/4	50	85.5	51	10	30	Nipple	2 257 0003 01



to the assembly instruction



to the product video



INFO

- // Version cone: 2 cone inserts
- // Version nipple: 2 x (G 1/2 x G 3/4)
- // For one-pipe and two-pipe systems
- // For interchanged flow and return pipes
- // With lateral spindle shut-off
- // With lateral bypass spindle
- // Eurocone compatible

TECHNICAL DATA

Material	Nickel-plated brass
Material moulded seal	EPDM / Teflon
Max. operating pressure	10 bar
Max. operating temperature	120 °C

AG1	AG2	AM mm	L mm	H mm	GL1 mm	SW1 mm	SW2 mm	Version	Item-No
G 3/4	G 3/4	50	112.9	61.1	8	30	17	Cone	2.257.0023.01
G 3/4	G 3/4	50	112.9	61.1	8	30	17	Nipple	2.257.0024.01



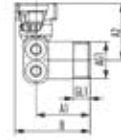
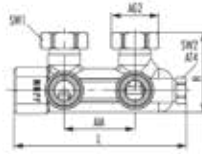
to the assembly instruction



to the product video

RADIATOR CONNECTIONS

Diverters corner type lockable (one/two pipe)



INFO

- // Version cone: 2 cone inserts
- // Version nipple: 2 x (G 1/2 x G 3/4)
- // For one-pipe and two-pipe systems
- // For interchanged flow and return pipes
- // With lateral spindle shut-off
- // With lateral bypass spindle
- // Eurocone compatible

TECHNICAL DATA

Material	Nickel-plated brass
Material moulded seal	EPDM / Teflon
Max. operating pressure	10 bar
Max. operating temperature	120 °C

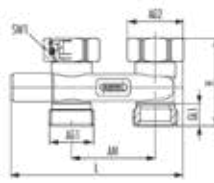
AG1	AG2	AM mm	A1 mm	A2 mm	AT4	L mm	H mm	G1 mm	SW1 mm	SW2 mm	Version	Item-No
G 3/4	G 3/4	50	39	35.4	Bypass	122.1	56.6	11	30	17	Cone	2 257 0026 01
G 3/4	G 3/4	50	39	35.4	Bypass	122.1	56.6	11	30	17	Nipple	2 257 0027 01



to the assembly instruction



to the product video



INFO

- // Version cone: 2 cone inserts
- // Version nipple: 2 x (G 1/2 x G 3/4)
- // For two-pipe systems
- // For interchanged flow and return pipes
- // With lateral spindle shut-off
- // Eurocone compatible

TECHNICAL DATA

Material	Nickel-plated brass
Material moulded seal	EPDM / Teflon
Max. operating pressure	10 bar
Max. operating temperature	120 °C

AG1	AG2	AM mm	L mm	H mm	GL1 mm	SW1 mm	Version	Item-No
G 3/4	G 3/4	50	103	51	10	30	Cone	2 257 0004 01
G 3/4	G 3/4	50	103	51	10	30	Nipple	2 257 0005 01



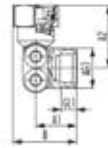
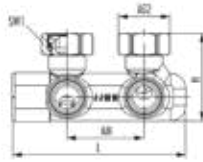
to the assembly instruction



to the product video

RADIATOR CONNECTIONS

Diverter corner type lockable



INFO

- // Version cone: 2 cone inserts
- // Version nipple: 2 x (G 1/2 x G 3/4)
- // For two-pipe systems
- // For interchanged flow and return pipes
- // With lateral spindle shut-off
- // Eurocone compatible

TECHNICAL DATA

Material	Nickel-plated brass
Material moulded seal	EPDM / Teflon
Max. operating pressure	10 bar
Max. operating temperature	120 °C

AG1	AG2	A1 mm	A2 mm	AM mm	L mm	H mm	GL1 mm	SW1 mm	Version	Item-No
G 3/4	G 3/4	27	40	50	112.7	53.5	10	30	Cone	2.257.0010.01
G 3/4	G 3/4	27	40	50	112.7	53.5	10	30	Nipple	2.257.0011.01



to the assembly instruction



to the product video

RADIATOR CONNECTIONS

Excenters for connection fittings



INFO

- // For the adjustment of axial pipe distances
- // Conical sealing
- // Eurocone compatible

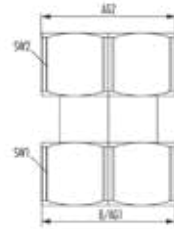
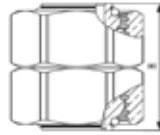
TECHNICAL DATA

Material	Nickel-plated brass
Material moulded seal	EPDM
Max. operating pressure	10 bar
Max. operating temperature	120 °C

AG1	AG2	A1 mm	B mm	H mm	GL1 mm	SW1 mm	Item-No
G 1/2	G 3/4	7.5	33.5	32.6	12	30	2 556 3412 01
G 3/4	G 3/4	7.5	34	32.6	10	30	2 556 3434 01
M22 x 1.5	G 3/4	7.5	33.5	32.6	10	30	2 556 3422 01

RADIATOR CONNECTIONS

Cone adapter



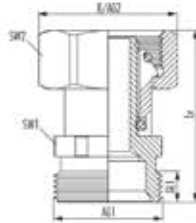
INFO

- // Connection between return screw fitting and valve radiator
- // Conical sealing
- // Eurocone compatible

TECHNICAL DATA

Material	Nickel-plated brass
Material moulded seal	EPDM
Max. operating pressure	10 bar
Max. operating temperature	120 °C

AG1	AG2	L mm	B mm	H mm	SW1 mm	SW2 mm	Item-No
G 3/4	G 3/4	33.5	33.5	32	30	30	2 155 3434 01



INFO

- // Version cone & nipple: 1 cone insert & 1 x (G 1/2 x G 3/4)
- // Version cone: 1 cone insert
- // Version nipple: 1 x (G 1/2 x G 3/4)
- // For length compensation of valves and fittings
- // Eurocone compatible

TECHNICAL DATA

Material	Nickel-plated brass
Material moulded seal	EPDM
Max. operating pressure	10 bar
Max. operating temperature	120 °C

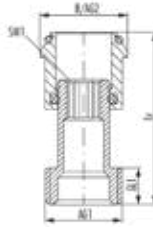
AG1	AG2	Lv mm	B mm	H mm	GL1 mm	SW1 mm	SW2 mm	Version	Item-No
G 3/4	G 3/4	37.1 – 53	33.5	53	10	24	30	-	2 559 3434 01
G 3/4	G 3/4	37.1 – 53	33.5	53	10	24	30	Nipple	2 559 3435 01
G 3/4	G 3/4	37.1 – 53	33.5	53	10	24	30	Cone	2 559 3436 01
G 3/4	G 3/4	37.1 – 53	33.5	53	10	24	30	Cone & nipple	2 859 3435 01



to the assembly instruction

RADIATOR CONNECTIONS

Telescopic connections



INFO

- // To compensate for distances between valve and radiator
- // O-ring sealing

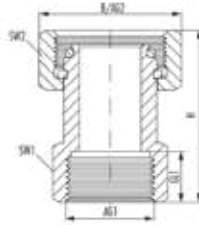
TECHNICAL DATA

Material	Nickel-plated brass
Material moulded seal	EPDM
Max. operating pressure	10 bar
Max. operating temperature	120 °C

AG1	AG2	Lv mm	B mm	H mm	GL1 mm	SW1 mm	Item-No
G 3/8	1/2	31 – 47	19.8	47	10	5	2 559 3800 01
G 1/2	3/4	31 – 47	23.9	47	10	8	2 559 1200 01
G 3/4	1	31 – 47	29	47	10	10	2 559 3400 01



to the assembly instruction



INFO

- // Adapter with G 3/4 union nut
- // O-ring sealing
- // Eurocone compatible

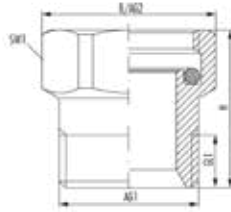
TECHNICAL DATA

Material	Nickel-plated brass
Material moulded seal	EPDM
Max. operating pressure	10 bar
Max. operating temperature	120 °C

AG1	AG2	L mm	B mm	H mm	GL1 mm	SW1 mm	SW2 mm	Item-No
G 3/8	G 3/4	33.5	33.5	40.55	9.8	24	30	2 559 3438 01
G 1/2	G 3/4	33.5	33.5	37.2	10	24	30	2 559 3412 01

RADIATOR CONNECTIONS

Extension piece



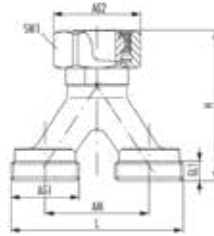
INFO

- // Extension of fittings, valves and return fittings
- // For the adjustment of horizontal and vertical pipe distances
- // O-ring sealing
- // Eurocone compatible

TECHNICAL DATA

Material	Nickel-plated brass
Material moulded seal	EPDM
Max. operating pressure	10 bar
Max. operating temperature	120 °C

AG1	AG2	L mm	B mm	H mm	GL1 mm	SW1 mm	Item-No
G 3/4	G 3/4	33	33	30	10	30	2.555.3434.01



INFO

- // Version nipple: 1 x (G 1/2 x G 3/4)
- // Small distributors for heating circuits, manifolds and control boxes
- // Eurocone compatible

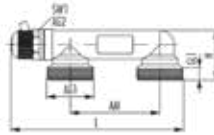
TECHNICAL DATA

Material	Nickel-plated brass
Material moulded seal	EPDM
Max. operating pressure	10 bar
Max. operating temperature	120 °C

AG1	AG2	AM mm	L mm	B mm	H mm	GL1 mm	SW1 mm	Version	Item-No
G 3/4	G 3/4	40	66	33.5	58	7.5	30	-	2.257.0008.01
G 3/4	G 3/4	40	66	33.5	58	7.55	30	Nipple	2.257.0009.01

RADIATOR CONNECTIONS

Mounting bridge



INFO

- // To span the flow and return pipes
- // With HUMMEL air bleeder valve
- // Eurocone compatible

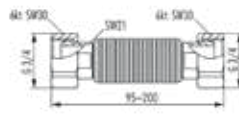
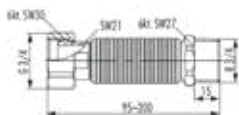
TECHNICAL DATA

Material	Nickel-plated brass
Material moulded seal	EPDM
Max. operating pressure	10 bar
Max. operating temperature	120 °C

AG1	AG2	AM mm	L mm	H mm	GL1 mm	SW1 mm	Item-No
G 3/4	G 1/4	50	96.4	28.5	8.4	15	2 257 0001 01



to the assembly instruction



left: 2 823 3434 01 | right: 2 830 3434 01

INFO

- // Union nut G 3/4
- // Stainless steel corrugated tube extensible
- // Flat sealing version
- // For the replacement of boilers, instantaneous water heaters, storage tanks and wall-mounted appliances

TECHNICAL DATA

Material	Stainless steel
Material moulded seal	AFM
Material union nut	Nickel-plated brass
Max. operating pressure	6 bar
Max. operating temperature	95 °C

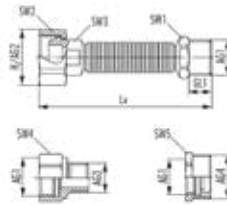
AG1	AG2	Lv mm	H mm	SW1 mm	SW2 mm	SW3 mm	Flow rate l/h	Item-No
R 3/4	G 3/4	95 – 200	33.5	27	30	21	2200	2 823 3434 01
G 3/4	G 3/4	95 – 200	33.5	30	30	21	2200	2 830 3434 01



to the product video

RADIATOR CONNECTIONS

Flexible radiator connections with reduction



INFO

- // Stainless steel corrugated tube extensible
- // Incl. Reduction G 1/2 x G 3/8 and G 3/4 x G 1/2
- // Eurocone compatible

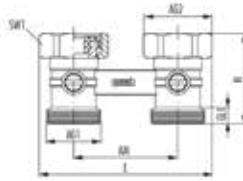
TECHNICAL DATA

Material	Stainless steel
Material moulded seal	EPDM
Material reduction	Nickel-plated brass
Max. operating pressure	10 bar
Max. operating temperature	120 °C

AG1	AG2	AG3	AG4	Lv mm	H mm	SW1 mm	SW2 mm	SW3 mm	Item-No
G 1/2	G 3/4	G 3/8	G 3/4	65 – 95	33.5	22	30	19	2 826 1238 341
G 1/2	G 3/4	G 3/8	G 3/4	93 – 143	33.5	22	30	19	2 827 1238 341
G 1/2	G 3/4	G 3/8	G 3/4	115 – 210	33.5	22	30	19	2 828 1238 341
G 1/2	G 3/4	G 3/8	G 3/4	190 – 410	33.5	22	30	19	2 829 1238 341



to the product video



INFO

- // Version cone: 2 cone inserts
- // Version nipple: 2 x (G 1/2 x G 3/4)
- // For two-pipe systems
- // Compact design
- // Flat sealing version
- // Ball shut-off valve
- // Eurocone compatible

TECHNICAL DATA

Material	Nickel-plated brass
Material moulded seal	EPDM / Teflon
Max. operating pressure	10 bar
Max. operating temperature	120 °C

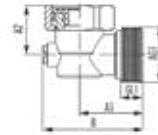
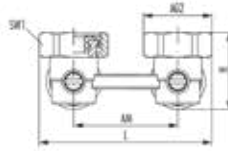
AG1	AG2	AM mm	L mm	H mm	GL1 mm	SW1 mm	Version	Item-No
G 3/4	G 3/4	50	83.5	43.5	8	30	Nipple	2 249 3435 01
G 3/4	G 3/4	50	83.5	43.5	8	30	Cone	2 249 3436 01



to the assembly instruction

RADIATOR CONNECTIONS

Two-pipe terminal blocks corner type



INFO

- // Version cone: 2 cone inserts
- // Version nipple: 2 x (G 1/2 x G 3/4)
- // For two-pipe systems
- // Compact design
- // Flat sealing version
- // Ball shut-off valve
- // Eurocone compatible

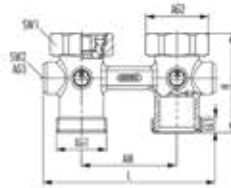
TECHNICAL DATA

Material	Nickel-plated brass
Material moulded seal	EPDM / Teflon
Max. operating pressure	10 bar
Max. operating temperature	120 °C

AG1	AG2	A1 mm	AM mm	L mm	H mm	GL1 mm	SW1 mm	Version	Item-No
G 3/4	G 3/4	30	50	83.5	35.6	10.5	30	Nipple	2 249 8435 01
G 3/4	G 3/4	30	50	83.5	35.6	10.5	30	Cone	2 249 8436 01



to the assembly instruction



INFO

- // Version cone: 2 cone inserts
- // Version nipple: 2 x (G 1/2 x G 3/4)
- // For two-pipe systems
- // Compact design
- // Flat sealing version
- // Ball shut-off valve
- // Eurocone compatible

TECHNICAL DATA

Material	Nickel-plated brass
Material moulded seal	EPDM / Teflon
Max. operating pressure	10 bar
Max. operating temperature	120 °C

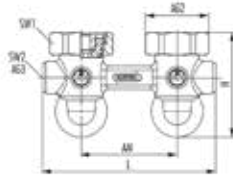
AG1	AG2	AG3	AM mm	L mm	H mm	GL1 mm	SW1 mm	SW2 mm	Version	Item-No
G 3/4	G 3/4	G 1/4	50	90.2	52.1	8	30	6	Nipple	2 218 3435 01
G 3/4	G 3/4	G 1/4	50	90.2	52.1	8	30	6	Cone	2 218 3436 01



to the assembly instruction

RADIATOR CONNECTIONS

Two-pipe terminal blocks corner type drainable



INFO

- // Version cone: 2 cone inserts
- // Version nipple: 2 x (G 1/2 x G 3/4)
- // For two-pipe systems
- // Compact design
- // Flat sealing version
- // Ball shut-off valve
- // Eurocone compatible

TECHNICAL DATA

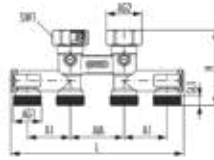
Material	Nickel-plated brass
Material moulded seal	EPDM / Teflon
Max. operating pressure	10 bar
Max. operating temperature	120 °C

AG1	AG2	AG3	AM mm	L mm	H mm	GL1 mm	SW1 mm	SW2 mm	Version	Item-No
G 3/4	G 3/4	G 1/4	50	90.2	53.2	11	30	6	Nipple	2 218 8435 01
G 3/4	G 3/4	G 1/4	50	90.2	53.2	11	30	6	Cone	2 218 8436 01



to the assembly instruction

Two-pipe terminal blocks straight type (quadruple connection)



INFO

- // Version cone: 2 cone inserts
- // Version nipple: 2 x (G 1/2 x G 3/4)
- // For two-pipe systems
- // Compact design
- // Flat sealing version
- // Ball shut-off valve
- // Eurocone compatible

TECHNICAL DATA

Material	Nickel-plated brass
Material moulded seal	EPDM / Teflon
Max. operating pressure	10 bar
Max. operating temperature	120 °C

AG1	AG2	A1 mm	AM mm	L mm	H mm	GL1 mm	SW1 mm	Version	Item-No
G 3/4	G 3/4	40	50	161	70.1	8	30	Cone	2.257.0021.01
G 3/4	G 3/4	40	50	161	70.1	8	30	Nipple	2.257.0022.01



to the assembly instruction

RADIATOR CONNECTIONS

One-pipe terminal blocks straight type



INFO

- // Version cone: 2 cone inserts
- // Version nipple: 2 x (G 1/2 x G 3/4)
- // For single pipe systems
- // Compact design
- // With lateral bypass spindle
- // Flat sealing version
- // Ball shut-off valve
- // Eurocone compatible

TECHNICAL DATA

Material	Nickel-plated brass
Material moulded seal	EPDM / Teflon
Max. operating pressure	10 bar
Max. operating temperature	120 °C

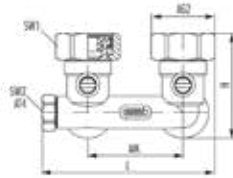
AG1	AG2	B mm	H mm	GL1 mm	SW1 mm	Version	Item-No
G 3/4	G 3/4	33.5	62.1	8	30	Nipple	2 248 3435 01
G 3/4	G 3/4	33.5	62.1	8	30	Cone	2 248 3436 01



to the assembly instruction

RADIATOR CONNECTIONS

One-pipe terminal blocks corner type



INFO

- // Version cone: 2 cone inserts
- // Version nipple: 2 x (G 1/2 x G 3/4)
- // For single pipe systems
- // Compact design
- // With lateral bypass spindle
- // Flat sealing version
- // Ball shut-off valve
- // Eurocone compatible

TECHNICAL DATA

Material	Nickel-plated brass
Material moulded seal	EPDM / Teflon
Max. operating pressure	10 bar
Max. operating temperature	120 °C

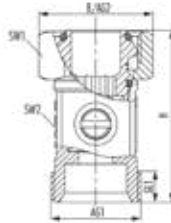
AG1	AG2	A1 mm	A2 mm	B mm	H mm	GL1 mm	SW1 mm	Version	Item-No
G 3/4	G 3/4	27	41.6	43.8	53.2	12	30	Nipple	2 248 8435 01
G 3/4	G 3/4	27	41.6	43.8	53.2	12	30	Cone	2 248 8436 01



to the assembly instruction

RADIATOR CONNECTIONS

Single-connection fittings straight type



INFO

- // Version nipple: 1 x (G 1/2 x G 3/4)
- // For two-pipe systems
- // Compact design
- // Conical sealing
- // Ball shut-off valve
- // Eurocone compatible

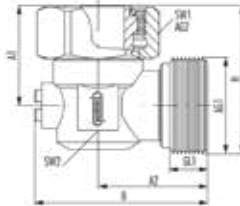
TECHNICAL DATA

Material	Nickel-plated brass
Material moulded seal	EPDM / Teflon
Max. operating pressure	10 bar
Max. operating temperature	120 °C

AG1	AG2	L mm	B mm	H mm	GL1 mm	SW1 mm	SW2 mm	Version	Item-No
G 3/4	G 3/4	33.5	33.5	50.6	9.2	30	23	-	2.256.3434.01
G 3/4	G 3/4	33.5	33.5	50.6	9.2	30	23	Nipple	2.256.3435.01



to the assembly instruction



INFO

- // Version nipple: 1 x (G 1/2 x G 3/4)
- // For two-pipe systems
- // Compact design
- // Conical sealing
- // Ball shut-off valve
- // Eurocone compatible

TECHNICAL DATA

Material	Nickel-plated brass
Material moulded seal	EPDM / Teflon
Max. operating pressure	10 bar
Max. operating temperature	120 °C

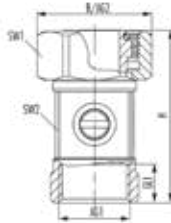
AG1	AG2	A1 mm	A2 mm	L mm	B mm	H mm	GL1 mm	SW1 mm	SW2 mm	Version	Item-No
G 3/4	G 3/4	27.6	30.4	33.5	46.8	40.7	10.4	30	23	-	2 256 8434 01
G 3/4	G 3/4	27.6	30.4	33.5	46.8	40.7	10.4	30	23	Nipple	2 256 8435 01



to the assembly instruction

RADIATOR CONNECTIONS

Single-connection fittings straight type with internal thread



INFO

- // Version nipple: 1 x (G 1/2 x G 3/4)
- // For two-pipe systems
- // Compact design
- // Conical sealing
- // Ball shut-off valve
- // Eurocone compatible

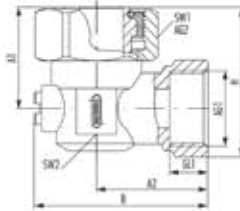
TECHNICAL DATA

Material	Nickel-plated brass
Material moulded seal	EPDM / Teflon
Max. operating pressure	10 bar
Max. operating temperature	120 °C

AG1	AG2	L mm	B mm	H mm	GL1 mm	SW1 mm	SW2 mm	Version	Item-No
G 1/2	G 3/4	33.5	33.5	50.6	10	30	23	-	2.256 1234 01
G 1/2	G 3/4	33.5	33.5	50.6	10	30	23	Nipple	2.256 1235 01



to the assembly instruction



INFO

- // Version nipple: 1 x (G 1/2 x G 3/4)
- // For two-pipe systems
- // Compact design
- // Conical sealing
- // Ball shut-off valve
- // Eurocone compatible

TECHNICAL DATA

Material	Nickel-plated brass
Material moulded seal	EPDM / Teflon
Max. operating pressure	10 bar
Max. operating temperature	120 °C

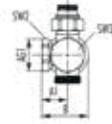
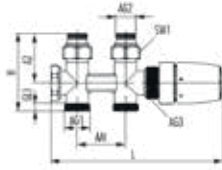
AG1	AG2	A1 mm	A2 mm	L mm	B mm	H mm	GL1 mm	SW1 mm	SW2 mm	Version	Item-No
G 1/2	G 3/4	27.6	30.4	33.5	46.8	40.4	9	30	23	-	2.256.841.2.01
G 1/2	G 3/4	27.6	30.4	33.5	46.8	40.4	9	30	23	Nipple	2.256.841.3.01



to the assembly instruction

RADIATOR CONNECTIONS

Quadro valve terminal blocks



INFO

- // Version nipple: 2 x (G 1/2 x G 3/4)
- // Valve manifold with thermostatic head and cover cap
- // For two-pipe systems in corner or through form
- // For pipe connection to the wall or perpendicular to the floor
- // The thermostatic head can be mounted on the left or right side
- // Thermostatic valve bonnet and shut-off bonnet can be exchanged
- // The flow must always be connected on the side of the thermostat sensor

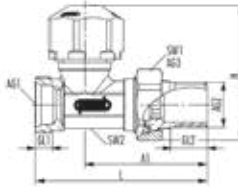
TECHNICAL DATA

Material	Nickel-plated brass
Material moulded seal	EPDM / Teflon
Max. operating pressure	10 bar
Max. operating temperature	90 °C
Thermostat connection	M30 x 1.5

AG1	AG2	AG3	AM mm	A1 mm	A2 mm	L mm	H mm	Colour	Version	Item-No
G 3/4	G 1/2	M30 x 1,5	50	26	51	178	80	chrome	Nipple	2 219 8412 02
G 3/4	G 1/2	M30 x 1,5	50	26	51	178	80	white	Nipple	2 219 8412 90
G 3/4	G 1/2	M30 x 1,5	50	26	51	178	80	black	Nipple	2 219 8412 05



to the assembly instruction



INFO

- // Single connection
- // With pre-adjustable thermostatic valve insert and protective cap
- // Eurocone compatible

TECHNICAL DATA

Material	Nickel-plated brass
Max. operating pressure	10 bar
Max. operating temperature	90 °C
Thermostat connection	M30 x 1.5

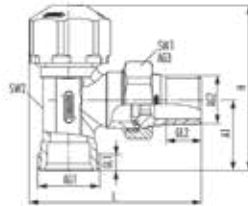
AG1	AG2	AG3	A1 mm	L mm	H mm	GL1 mm	GL2 mm	SW1 mm	SW2 mm	SW3 mm	Item-No
G 3/4	G 1/2	G 3/4	56.7	80	54	7.5	15	30	22	22	2 914 1234 01



to the assembly instruction

RADIATOR CONNECTIONS

Thermostatic valve corner type (Eurocone)



INFO

- // Single connection
- // With pre-adjustable thermostatic valve insert and protective cap
- // Eurocone compatible

TECHNICAL DATA

Material	Nickel-plated brass
Max. operating pressure	10 bar
Max. operating temperature	90 °C
Thermostat connection	M30 x 1.5

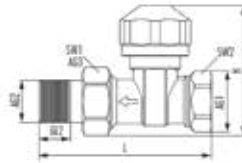
AG1	AG2	AG3	A1 mm	L mm	H mm	GL1 mm	GL2 mm	SW1 mm	SW2 mm	SW3 mm	Item-No
G 3/4	G 1/2	G 3/4	30	73.2	65.5	7.5	15	30	22	22	2 904 1234 01



to the assembly instruction

RADIATOR CONNECTIONS

Thermostatic valves straight type (internal thread)



INFO

- // Single connection
- // With pre-adjustable thermostatic valve insert and protective cap
- // Internal thread

TECHNICAL DATA

Material	Nickel-plated brass
Max. operating pressure	10 bar
Max. operating temperature	90 °C
Thermostat connection	M30 x 1.5

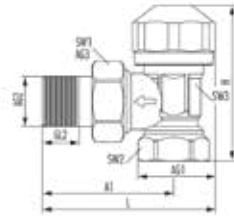
AG1	AG2	AG3	L mm	H mm	GL2 mm	SW1 mm	SW2 mm	SW3 mm	Item-No
G 3/8	G 3/8	G 5/8	75	57.5	11	27	22	22	2 914 3800 01
G 1/2	G 1/2	G 3/4	84	59	15	30	27	22	2 914 1200 01
G 3/4	G 3/4	G 1	96	71	16	38	32	22	2 914 3400 01



to the assembly instruction

RADIATOR CONNECTIONS

Thermostatic valves corner type (internal thread)



INFO

- // Single connection
- // With pre-adjustable thermostatic valve insert and protective cap
- // Internal thread

TECHNICAL DATA

Material	Nickel-plated brass
Max. operating pressure	10 bar
Max. operating temperature	90 °C
Thermostat connection	M30 x 1.5

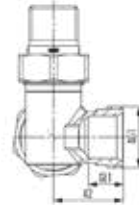
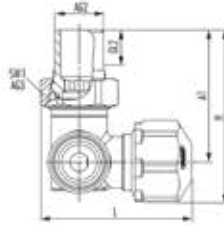
AG1	AG2	AG3	A1 mm	L mm	H mm	GL2 mm	SW1 mm	SW2 mm	SW3 mm	Item-No
G 3/8	G 3/8	G 5/8	20	65.5	55.5	11	27	22	22	2 904 3800 01
G 1/2	G 1/2	G 3/4	25	69.5	60.5	15	30	27	22	2 904 1200 01
G 3/4	G 3/4	G 1	29	76.5	78	16	38	32	22	2 904 3400 01



to the assembly instruction

RADIATOR CONNECTIONS

Thermostatic valve angle corner type right



INFO

- // Single connection
- // With pre-adjustable thermostatic valve insert and protective cap
- // Eurocone compatible

TECHNICAL DATA

Material	Nickel-plated brass
Max. operating pressure	10 bar
Max. operating temperature	90 °C
Thermostat connection	M30 x 1.5

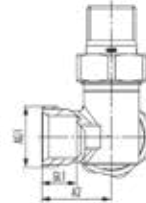
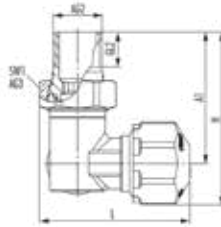
AG1	AG2	AG3	A1 mm	L mm	H mm	GL1 mm	GL2 mm	SW1 mm	Item-No
G 3/4	G 1/2	G 3/4	56.7	53.5	73.2	7.5	15	30	2 922 1234 01



to the assembly instruction

RADIATOR CONNECTIONS

Thermostatic valve angle corner type left



INFO

- // Single connection
- // With pre-adjustable thermostatic valve insert and protective cap
- // Eurocone compatible

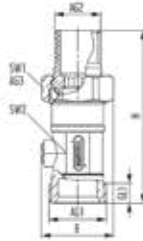
TECHNICAL DATA

Material	Nickel-plated brass
Max. operating pressure	10 bar
Max. operating temperature	90 °C
Thermostat connection	M30 x 1.5

AG1	AG2	AG3	A1 mm	L mm	H mm	GL1 mm	GL2 mm	SW1 mm	Item-No
G 3/4	G 1/2	G 3/4	56.7	53.5	73.2	7.5	15	30	2 923 1234 01



to the assembly instruction



INFO

- // Single connection
- // Ball shut-off valve
- // Eurocone compatible

TECHNICAL DATA

Material	Nickel-plated brass
Max. operating pressure	10 bar
Max. operating temperature	90 °C

AG1	AG2	AG3	L mm	B mm	H mm	GL1 mm	GL2 mm	SW1 mm	SW2 mm	Item-No
G 3/4	G 1/2	G 3/4	33.5	33.5	79.7	9.2	15	30	23	2 920 1234 01



to the assembly instruction

RADIATOR CONNECTIONS

Threaded-joint radiator return corner type (Eurocone)



INFO

- // Single connection
- // Ball shut-off valve
- // Eurocone compatible

TECHNICAL DATA

Material	Nickel-plated brass
Max. operating pressure	10 bar
Max. operating temperature	90 °C

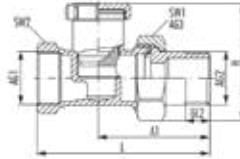
AG1	AG2	AG3	A1 mm	A2 mm	L mm	B mm	H mm	GL1 mm	GL2 mm	SW1 mm	SW2 mm	Item-No
G 3/4	G 1/2	G 3/4	56.7	30	46.8	33.5	69.8	10.5	15	30	23	2 925 1234 01



to the assembly instruction

RADIATOR CONNECTIONS

Threaded-joint radiator returns straight type (internal thread)



INFO

- // Single connection
- // Spindle shut-off
- // Adjustable rate of flow
- // Internal thread

TECHNICAL DATA

Material	Nickel-plated brass
Max. operating pressure	10 bar
Max. operating temperature	90 °C

AG1	AG2	AG3	A1 mm	L mm	B mm	H mm	GL2 mm	SW1 mm	SW2 mm	Item-No
G 3/8	G 3/8	G 5/8	55	75	32	43.5	11	25	22	2 915 3800 01
G 1/2	G 1/2	G 3/4	60	84	33.5	45	15	30	26	2 915 1200 01
G 3/4	G 3/4	G 1	62	95	44	57	16	37	30	2 915 3400 01



to the assembly instruction

RADIATOR CONNECTIONS

Threaded-joint radiator returns corner type (internal thread)



INFO

- // Single connection
- // Spindle shut-off
- // Adjustable rate of flow
- // Internal thread

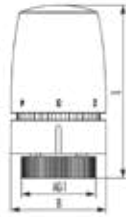
TECHNICAL DATA

Material	Nickel-plated brass
Max. operating pressure	10 bar
Max. operating temperature	90 °C

AG1	AG2	AG3	L mm	B mm	H mm	GL2 mm	SW1 mm	SW2 mm	Item-No
G 3/8	G 3/8	G 5/8	64.5	32	41.5	11	25	22	2 905 3800 01
G 1/2	G 1/2	G 3/4	69.5	33.5	46.5	15	30	26	2 905 1200 01
G 3/4	G 3/4	G 1	82	44	64	16	37	30	2 905 3400 01



to the assembly instruction



INFO

- // Solids sensor
- // Zero setting
- // Temperature limit

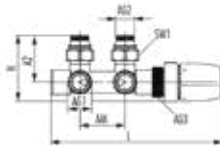
TECHNICAL DATA

Material thermostatic head	ABS / PA
Material union nut	Nickel-plated brass / Coated brass
Frost protection device	Yes
Position 0	Radiator closed
Position 1-5	limited at respective temperature setting
Control range	8 – 28 °C
max. Sensor temperature	50 °C

AG1	L mm	B mm	Colour	Item-No
M30 x 1.5	76	42.5	chrome	2 907 0001 02
M30 x 1.5	76	42.5	white	2 907 0001 90
M30 x 1,5	76	42,5	black	2 907 0001 05

RADIATOR CONNECTIONS

Set 1 corner type



INFO

- // Design fitting with thermostatic head
- // For two-pipe systems
- // For pipe connection to the wall
- // Valve presettable
- // Thermostatic valve bonnet and shut-off bonnet can be exchanged
- // The thermostatic head can be mounted on the left or right side
- // The flow must always be connected on the side of the thermostat sensor

TECHNICAL DATA

Material	Brass white / Brass chrome
Material moulded seal	EPDM / Teflon
Max. operating pressure	10 bar
Max. operating temperature	90 °C

AG1	AG2	AG3	AM mm	A1 mm	A2 mm	L mm	H mm	SW1 mm	Colour	Item-No
G 3/4	G 1/2	M30 x 1.5	50	30	51.5	191	72.8	30	chrome	2 810 0381 02
G 3/4	G 1/2	M30 x 1.5	50	30	51.5	191	72.8	30	white	2 810 0381 90



to the assembly instruction



INFO

- // Design fitting with thermostatic head
- // For two-pipe systems
- // For pipe connection perpendicular to the floor
- // Valve presettable
- // Thermostatic valve bonnet and shut-off bonnet can be exchanged
- // The thermostatic head can be mounted on the left or right side
- // The flow must always be connected on the side of the thermostat sensor

TECHNICAL DATA

Material	Brass white / Brass chrome
Material moulded seal	EPDM / Teflon
Max. operating pressure	10 bar
Max. operating temperature	90 °C

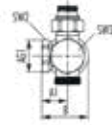
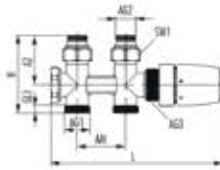
AG1	AG2	AG3	AM mm	L mm	H mm	GL1 mm	SW1 mm	Colour	Item-No
G 3/4	G 1/2	M30 x 1.5	50	191	81.4	8.2	30	chrome	2 810 0382 02
G 3/4	G 1/2	M30 x 1.5	50	191	81.4	8.2	30	white	2 810 0382 90



to the assembly instruction

RADIATOR CONNECTIONS

Quadro valve terminal blocks



INFO

- // Version nipple: 2 x (G 1/2 x G 3/4)
- // Valve manifold with thermostatic head and cover cap
- // For two-pipe systems in corner or through form
- // For pipe connection to the wall or perpendicular to the floor
- // The thermostatic head can be mounted on the left or right side
- // Thermostatic valve bonnet and shut-off bonnet can be exchanged
- // The flow must always be connected on the side of the thermostat sensor

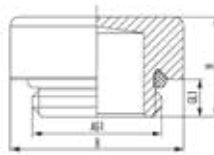
TECHNICAL DATA

Material	Nickel-plated brass
Material moulded seal	EPDM / Teflon
Max. operating pressure	10 bar
Max. operating temperature	90 °C
Thermostat connection	M30 x 1.5

AG1	AG2	AG3	AM mm	A1 mm	A2 mm	L mm	H mm	Colour	Version	Item-No
G 3/4	G 1/2	M30 x 1.5	50	26	51	178	80	chrome	Nipple	2 219 8412 02
G 3/4	G 1/2	M30 x 1.5	50	26	51	178	80	white	Nipple	2 219 8412 90
G 3/4	G 1/2	M30 x 1,5	50	26	51	178	80	black	Nipple	2 219 8412 05



to the assembly instruction



INFO

- // Design air vent and sealing plug in set
- // With pushbutton function
- // Vent opening adjustable 360°
- // O-ring sealing

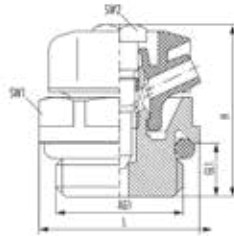
TECHNICAL DATA

Material	Brass chrome / Brass white
Material moulded seal	EPDM
Max. operating pressure	10 bar
Max. operating temperature	120 °C

AG1	B mm	H mm	GL1 mm	Colour	Item-No
G 1/2	27.7	16	6	high-gloss chrome-plated	2 400 0001 02
G 1/2	27.7	16	6	white	2 400 0001 90

RADIATOR CONNECTIONS

Air bleeder valves turnable with o-ring G 1/2



INFO

- // Rotatable vent 360°
- // Venting hose attachable
- // Key control via SW5
- // O-ring sealing

TECHNICAL DATA

Material	Brass white / Brass chrome
Max. operating pressure	10 bar
Max. operating temperature	90 °C

AG1	L mm	H mm	GL1 mm	SW1 mm	SW2 mm	Colour	Item-No
G 1/2	24	20	6.5	22	5	chrome	2 536 1201 02
G 1/2	24	20	6.5	22	5	white	2 536 1201 90

RADIATOR CONNECTIONS

Sealing plugs made of coated brass



INFO

// For bathroom design, tubes, panels and panel radiators

// O-ring sealing

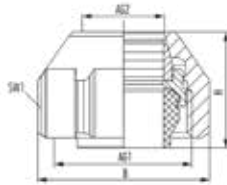
TECHNICAL DATA

Material	Coated brass
Material moulded seal	EPDM
Max. operating pressure	10 bar
Max. operating temperature	90 °C

AG1	B mm	H mm	GL1 mm	SW1 mm	Colour	Item-No
G 1/2	24	12.8	7	22	chrome	2 506 1201 02
G 1/2	24	12.8	7	22	white	2 506 1201 90

RADIATOR CONNECTIONS

Compression fittings SpeedFIX



INFO

- // Preassembled and fixed
- // Clamping range 15 mm
- // For copper, precision steel or (stainless) steel pipes with a wall thickness ≥ 1 mm (according to DIN EN 1057, DIN EN 10305-2 and DIN EN 10312)
- // Low tightening torque (easy mobility)
- // Suitable for district heating
- // EPDM sealing element
- // Eurocone compatible

TECHNICAL DATA

Material	Coated brass
Material moulded seal	EPDM
Material clamping ring	Brass blank
Max. operating pressure	10 bar
Max. operating temperature	120 °C
Max. operating temperature	95 °C

AG1	AG2	B mm	H mm	SW1 mm	Colour	Item-No
G 3/4	15 mm	33.2	20.5	30	chrome	2 855 0015 02
G 3/4	15 mm	33.2	20.5	30	white	2 855 0015 90

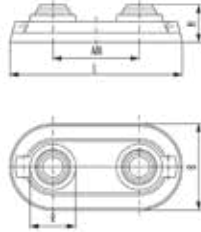


to the assembly instruction



to the product video





INFO

- // For double connection fittings
- // Can be cut for different pipe diameters
- // Flat design

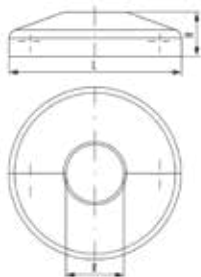
TECHNICAL DATA

Material	ABS
Collar	Double

AM mm	L mm	B mm	H mm	R mm	Colour	Item-No
50	100	50	22	12, 15, 18, 20	chrome	2 612 5000 02
50	100	50	22	12, 15, 18, 20	white	2 612 5000 90

RADIATOR CONNECTIONS

Single collars



INFO

// For single connection fittings

// Flat design

TECHNICAL DATA

Material	ABS
Collar	Single

L mm	B mm	H mm	R mm	Colour	Item-No
45	45	11.6	15	chrome	2 613 5000 02
45	45	11.6	15	white	2 613 5000 90
45	45	11.6	16	chrome	2 613 5001 02
45	45	11.6	16	white	2 613 5001 90





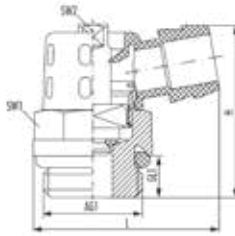
OUTFLOW

- // Outflow valves
- // FE valves
- // SFE valves
- // Filling and draining plug
- // Filling and emptying tool



OUTFLOW

Outflow valves turnable with key control



INFO

- // With axial-rotating water output 360°
- // Key control via SW5
- // O-ring sealing

TECHNICAL DATA

Material	Nickel-plated brass
Max. operating pressure	10 bar / 16 bar (with closed spindle and a max. operating temperature of 100°C)
Max. operating temperature	130 °C

AG1	L mm	H mm	GL1 mm	SW1 mm	SW2 mm	Color	Item-No
G 3/8	32	29	7	17	5	white	2 540 3800 01
G 3/8	32	29	7	17	5	black	2 540 3805 01
G 1/2	32	29	7	19	5	white	2 531 1200 01
G 1/2	32	29	7	19	5	black	2 531 1205 01



INFO

- // With axial-rotating water output 360°
- // Handwheel control
- // O-ring sealing

TECHNICAL DATA

Material	Nickel-plated brass
Max. operating pressure	10 bar / 16 bar (with closed spindle and a max. operating temperature of 100°C)
Max. operating temperature	130 °C

AG1	L mm	H mm	GL1 mm	SW1 mm	Item-No
G 1/4	31	36.3	6	17	2 540 1400 01
G 3/8	32	36.3	7	17	2 540 3801 01

OUTFLOW

Outflow valve



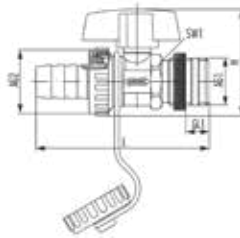
INFO

- // With fixed water outlet
- // With closure cap and knurled thread
- // Concealed spindle
- // Key control via SW5

TECHNICAL DATA

Material	Nickel-plated brass
Max. operating pressure	10 bar
Max. operating temperature	130 °C

AG1	L mm	H mm	GL1 mm	SW1 mm	Item-No
G 3/8	32	29.5	12.5	18	2 421 3800 01



INFO

- // Fillable and drainable ball valve
- // For heat generation, storage tanks and pipe systems
- // With hose nozzle, protective cap, strap and lock nut
- // Self-sealing via PTFE sealing ring

TECHNICAL DATA

Material	Nickel-plated brass
Material Handles	Zinc Die Cast
Max. operating pressure	10 bar
Max. operating temperature	90 °C

AG1	L mm	H mm	GL1 mm	SW1 mm	Item-No
G 3/8	72	46.8	15	21.5	2 947 3800 01
G 1/2	76	46.8	15	21.5	2 948 1200 01
G 3/4	72	46.8	10	27	2 947 3400 01



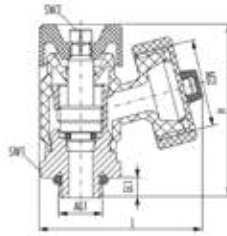
to the assembly instruction

OUTFLOW

SFE valves with handwheel control black

PLEASE NOTE:

Discontinued article



INFO

- // For heating circuit manifolds, heat generators, storage tanks and pipe systems
- // For washing, filling and emptying
- // With handwheel and key control
- // Axial-rotating hose connection 360°
- // O-ring sealing

TECHNICAL DATA

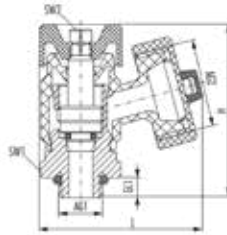
Material	Nickel-plated brass
Max. operating pressure	10 bar
Max. operating temperature	90 °C

AG1	AG2	L mm	H mm	GL1 mm	SW1 mm	SW2 mm	Item-No
G 1/2	G 3/4	49	52	7.5	24	5	2 700 1200 01
G 3/4	G 3/4	49	54.3	7.3	24	5	2 700 3400 01
G 1	G 3/4	53	57.5	10	24	5	2 700 1000 01

PLEASE NOTE:

Discontinued article

SFE valves with handwheel control



INFO

- // For heating circuit manifolds, heat generators, storage tanks and pipe systems
- // For washing, filling and emptying
- // With handwheel and key control
- // Axial-rotating hose connection 360°
- // O-ring sealing

TECHNICAL DATA

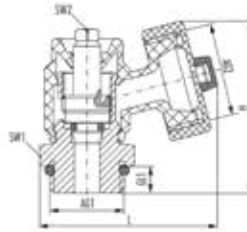
Material	Brass blank
Max. operating pressure	10 bar
Max. operating temperature	90 °C

AG1	AG2	L mm	H mm	GL1 mm	SW1 mm	SW2 mm	Item-No
G 1/4	G 3/4	49	52	6	22	5	2 700 1400 00
G 3/8	G 3/4	49	52	7.5	22	5	2 700 3800 00
G 1/2	G 3/4	49	52	7.5	24	5	2 700 1200 00

OUTFLOW

SFE valve

PLEASE NOTE:
Discontinued article



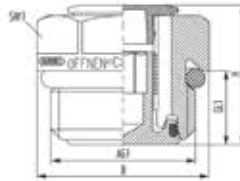
INFO

- // For heating circuit manifolds, heat generators, storage tanks and pipe systems
- // For washing, filling and emptying
- // Key operation
- // Axial-rotating hose connection 360°
- // O-ring sealing

TECHNICAL DATA

Material	Brass blank
Max. operating pressure	10 bar
Max. operating temperature	90 °C

AG1	AG2	L mm	H mm	GL1 mm	SW1 mm	SW2 mm	Item-No
G 1/2	G 3/4	49	46	7.5	24	5	2710120000



INFO

- // For heating circuit manifolds, heat generators, storage tanks and pipe systems
- // Controlled filling and emptying
- // Suitable for filling and emptying tool 2 584 1001 00
- // O-ring sealing

TECHNICAL DATA

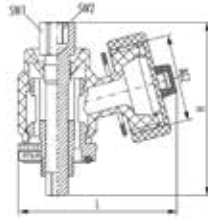
Material	Nickel-plated brass
Max. operating pressure	10 bar
Max. operating temperature	90 °C

AG1	B mm	H mm	GL1 mm	SW1 mm	Item-No
G 1/2	25	20	10	22	2 580 1201 01

OUTFLOW

Filling and emptying tool

PLEASE NOTE:
Discontinued article



INFO

- // Suitable for filling/emptying plug 2 580 1201 01
- // Axial-rotating hose connection 360°
- // O-ring sealing

TECHNICAL DATA

Material	Brass blank
Max. operating pressure	10 bar
Max. operating temperature	90 °C

AG2	L mm	H mm	SW1 mm	SW2 mm	Item-No
G 3/4	50	53	10	6	2 584 1001 00



to the assembly instruction





VENTING

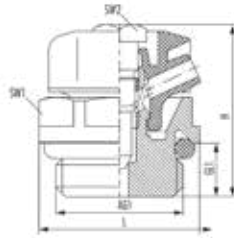
// Air bleeder valves

// Automatic ventings



VENTING

Air bleeder valves turnable with o-ring



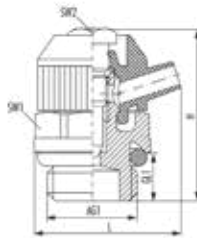
INFO

- // Rotatable vent 360°
- // Venting hose attachable
- // Key control via SW5
- // O-ring sealing

TECHNICAL DATA

Material	Nickel-plated brass
Max. operating pressure	10 bar / 16 bar (with closed spindle and a max. operating temperature of 100°C)
Max. operating temperature	130 °C

AG1	L mm	H mm	GL1 mm	SW1 mm	SW2 mm	Color	Item-No
G 3/8	21	22,5	7	19	5	white	2 532 3800 01
G 3/8	21	22,5	7	19	5	black	2 537 3805 01
G 1/2	24	20	6,5	22	5	white	2 537 1200 01
G 1/2	24	20	6,5	22	5	black	2 537 1205 01



INFO

- // Rotatable vent 360°
- // Venting hose attachable
- // Key control via SW5
- // O-ring sealing

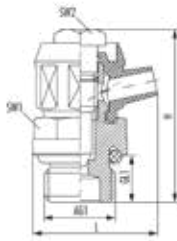
TECHNICAL DATA

Material	Nickel-plated brass
Max. operating pressure	10 bar / 16 bar (with closed spindle and a max. operating temperature of 100°C)
Max. operating temperature	130 °C

AG1	L mm	H mm	GL1 mm	SW1 mm	SW2 mm	Color	Item-no
G 1/4	21,5	25,2	7	15	5	white	2 531 1400 01
G 1/4	21,5	25,2	7	15	5	black	2 531 1405 01

VENTING

Air bleeder valves turnable with o-ring G 1/8



INFO

- // Rotatable vent 360°
- // Venting hose attachable
- // Key control via SW5
- // O-ring sealing

TECHNICAL DATA

Material	Nickel-plated brass
Max. operating pressure	10 bar / 16 bar (with closed spindle and a max. operating temperature of 100°C)
Max. operating temperature	130 °C

AG1	L mm	H mm	GL1 mm	SW1 mm	SW2 mm	Color	Item-No
G 1/8	17,2	23,8	6,5	11	5	white	2 535 1800 01
G 1/8	17,2	23,8	6,5	11	5	black	2 535 1805 01

Air bleeder valve with key control R 1/8



INFO

- // Venting with drip eye
- // With fixed air outlet
- // Key control via SW5
- // Conical thread

TECHNICAL DATA

Material	Nickel-plated brass
Max. operating pressure	10 bar / 16 bar (with closed spindle and a max. operating temperature of 100°C)
Max. operating temperature	130 °C

AG1	L mm	H mm	GL1 mm	SW1 mm	SW2 mm	Item-No
R 1/8	12.7	18.9	6	11	5	2 105 1800 01

VENTING

Air bleeder valves with key control



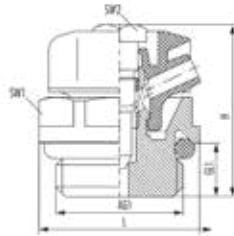
INFO

- // With fixed air outlet
- // Venting hose attachable
- // Key control via SW5
- // With knurled thread

TECHNICAL DATA

Material	Nickel-plated brass
Max. operating pressure	10 bar / 16 bar (with closed spindle and a max. operating temperature of 100°C)
Max. operating temperature	130 °C

AG1	L mm	H mm	GL1 mm	SW1 mm	SW2 mm	Item-No
G 1/8	19	26	7	12	5	2 110 1800 01
G 1/4	20	26	7	15	5	2 110 1400 01
G 3/8	21	26.9	7	17	5	2 110 3801 01



INFO

- // Rotatable vent 360°
- // Venting hose attachable
- // Key control via SW5
- // O-ring sealing

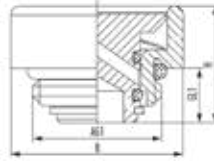
TECHNICAL DATA

Material	Brass white / Brass chrome
Max. operating pressure	10 bar
Max. operating temperature	90 °C

AG1	L mm	H mm	GL1 mm	SW1 mm	SW2 mm	Colour	Item-No
G 1/2	24	20	6.5	22	5	chrome	2.536.1201.02
G 1/2	24	20	6.5	22	5	white	2.536.1201.90

VENTING

Air bleeder valves Design



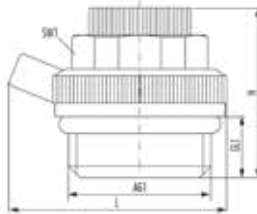
INFO

- // Design air vent with push button function
- // Vent opening adjustable 360°
- // O-ring sealing

TECHNICAL DATA

Material	Brass chrome / Brass white
Material moulded seal	EPDM
Max. operating pressure	10 bar
Max. operating temperature	120 °C

AG1	B mm	H mm	GL1 mm	Colour	Item-No
G 1/2	27.7	18.7	6	high-gloss chrome-plated	2 432 1200 02
G 1/2	27.7	18.7	6	white	2 432 1200 90



INFO

- // Automatic venting version
- // With expanding washers
- // With axial-rotating venting 360°
- // O-ring sealing

TECHNICAL DATA

Material	Nickel-plated brass
Max. operating pressure	8,5 bar
Max. operating temperature	115 °C

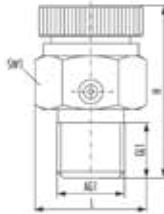
AG1	L mm	H mm	GL1 mm	SW1 mm	Item-No
G 1/2	36	25	9	19	2 520 1200 01



to the assembly instruction

VENTING

Automatic ventings



INFO

- // Venting with drip eye
- // With fixed air outlet
- // Automatic venting version
- // With expanding washers
- // With knurled thread

TECHNICAL DATA

Material	Nickel-plated brass
Max. operating pressure	8,5 bar
Max. operating temperature	115 °C

AG1	L mm	H mm	GL1 mm	SW1 mm	Item-No
G 1/8	16	25	8.5	14	2 120 1800 01
G 1/4	17	25	8.5	15	2 120 1400 01
G 3/8	19.5	25	10	17	2 120 3800 01



to the assembly instruction





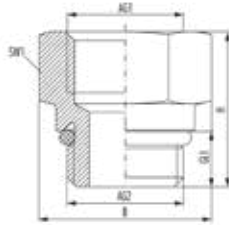
PLUGS AND REDUCTIONS

- // Reductions
- // Plugs
- // Connecting plug
- // Sealing plug



PLUGS AND REDUCTIONS

Connection pieces



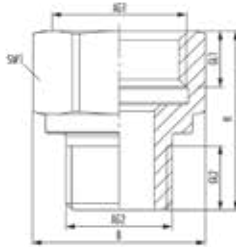
INFO

// O-ring sealing on the external thread

TECHNICAL DATA

Material	Nickel-plated brass
Material moulded seal	EPDM
Max. operating pressure	10 bar
Max. operating temperature	120 °C

AG1	AG2	B mm	H mm	GL1 mm	SW1 mm	Item-No
G 1/2	G 1/2	31.1	28	10	27	2 550 1212 01
G 3/4	G 1/2	34.6	31	10	30	2 550 1234 01
G 1	G 3/4	41.6	28.5	10	36	2 550 3410 01



INFO

- // With EPDM seal
- // Female thread flat sealing

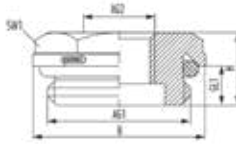
TECHNICAL DATA

Material	Nickel-plated brass
Material moulded seal	EPDM
Max. operating pressure	10 bar
Max. operating temperature	120 °C

AG1	AG2	B mm	H mm	GL1 mm	GL2 mm	SW1 mm	Item-No
G 1/2	G 3/8	27	28	9	10	24	2 549 1238 01

PLUGS AND REDUCTIONS

Connection plug



INFO

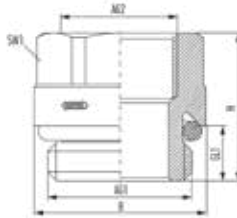
// Flat design

// O-ring sealing on the external thread

TECHNICAL DATA

Material	Nickel-plated brass
Material moulded seal	EPDM
Max. operating pressure	10 bar
Max. operating temperature	120 °C

AG1	Thread	AG2	B mm	H mm	GL1 mm	SW1 mm	Item-No
G 1/4	right	G 1/8	17	10.9	5.9	22	2 550 1418 01
G 1/2	right	G 3/8	24	13	7	22	2 550 1238 99
G 3/4	right	G 1/2	32	14.5	7.5	27	2 550 3412 01
G 1	right	G 3/8	40	18	10	32	2 550 1038 01
G 1	right	G 1/2	40	18	10	32	2 550 1012 01
G 1	right	G 3/4	40	18	10	32	2 550 1034 01
G 1 1/2	left	G 1/2	55	24	11	32	2 550 4112 01
G 1 1/2	right	G 1/2	55	24	11	32	2 550 4012 01



INFO

- // Reinforced version
- // O-ring sealing on the external thread

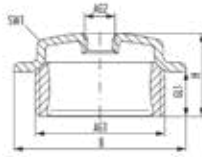
TECHNICAL DATA

Material	Nickel-plated brass
Material moulded seal	EPDM
Max. operating pressure	10 bar
Max. operating temperature	120 °C

AG1	AG2	B mm	H mm	GL1 mm	SW1 mm	Item-No
G 1/2	G 3/8	25	21.5	8	22	2 551 1238 01

PLUGS AND REDUCTIONS

Radiator connection plug



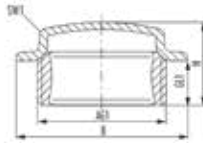
INFO

- // For tubes, links and DIN radiators
- // Flat sealing version

TECHNICAL DATA

Material	Steel
Max. operating pressure	10 bar
Max. operating temperature	90 °C

AG1	Thread	AG2	B mm	H mm	GL1 mm	SW1 mm	Item-No
G 1 1/4	left	G 3/8	56	27.2	14.5	41	2 350 5438 03
G 1 1/4	left	G 1/2	56	27.2	14.5	41	2 350 5412 03
G 1 1/4	left	G 3/4	56	27.2	14.5	41	2 350 5434 03
G 1 1/4	right	G 3/8	56	27.2	14.5	41	2 351 5438 03
G 1 1/4	right	G 1/2	56	27.2	14.5	41	2 351 5412 03
G 1 1/4	right	G 3/4	56	27.2	14.5	41	2 351 5434 03
G 1 1/4	right	G 1	56	27.2	14.5	41	2 351 5410 03



INFO

- // For tubes, links and DIN radiators
- // Flat sealing version

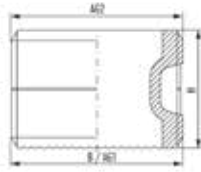
TECHNICAL DATA

Material	Steel
Max. operating pressure	10 bar
Max. operating temperature	90 °C

AG1	Thread	B mm	H mm	GL1 mm	SW1 mm	Item-No
G 1 1/4	left	56	27.2	14.5	41	2 300 5400 03
G 1 1/4	right	56	27.2	14.5	41	2 301 5400 03

PLUGS AND REDUCTIONS

Radiator nipple



INFO

- // For tubes, links and DIN radiators
- // Left-right-thread

TECHNICAL DATA

Material	Steel
Max. operating pressure	10 bar
Max. operating temperature	120 °C

AG1	AG2	L mm	B mm	H mm	GL1 mm	GL2 mm	Item-No
G 1 1/4	G 1 1/4	42	42	29	14.5	14.5	2 360 5400 03



INFO

- // Matching gasket for the HUMMEL range of steel plugs
- // Graphitised front and back

TECHNICAL DATA

Material	Tesnite BA50
Max. operating pressure	10 bar
Max. operating temperature	90 °C

AG1	L mm	B mm	H mm	Item-No
1 1/4	55	55	1	2 402 0000 04

PLUGS AND REDUCTIONS

Radiator plug



INFO

- // For radiators, fittings, devices and assemblies
- // O-ring sealing

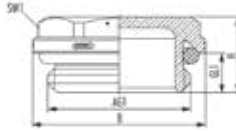
TECHNICAL DATA

Material	Brass blank / Nickel-plated brass
Max. operating pressure	10 bar
Max. operating temperature	130 °C

AG1	B mm	H mm	GL1 mm	SW1 mm	Material	Item-No
G 1/8	13	11	5.8	10	Nickel-plated brass	2 500 1800 01
G 1/4	18.9	13	7	17	Nickel-plated brass	2 500 1400 01
G 3/8	21	13.5	7.4	19	Nickel-plated brass	2 500 3800 01
G 1/2	24	12.8	7	22	Brass blank	2 506 1200 00
G 1/2	24	12.8	7	22	Nickel-plated brass	2 506 1200 01
G 3/4	32	14	7.3	27	Nickel-plated brass	2 500 3400 01
G 1	40	18	10	32	Nickel-plated brass	2 500 1000 01

PLUGS AND REDUCTIONS

Sealing plug made of coated brass



INFO

- // For bathroom design, tubes, panels and panel radiators
- // O-ring sealing

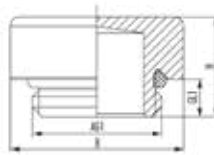
TECHNICAL DATA

Material	Coated brass
Material moulded seal	EPDM
Max. operating pressure	10 bar
Max. operating temperature	90 °C

AG1	B mm	H mm	GL1 mm	SW1 mm	Colour	Item-No
G 1/2	24	12.8	7	22	chrome	2 506 1201 02
G 1/2	24	12.8	7	22	white	2 506 1201 90

PLUGS AND REDUCTIONS

Sealing plug made of brass



INFO

- // Design closure plug with mounting construction protection cap
- // For bathroom and design radiators
- // O-ring sealing

TECHNICAL DATA

Material	Brass chrome / Brass white
Material moulded seal	EPDM
Max. operating pressure	10 bar
Max. operating temperature	120 °C

AG1	B mm	H mm	GL1 mm	Colour	Item-No
G 1/2	27.7	16	6	high-gloss chrome-plated	2 400 1200 02
G 1/2	27.7	16	6	white	2 400 1200 90





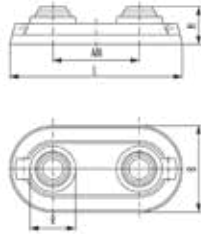
ACCESSORIES

- // Collars
- // Air bleed key
- // Tools
- // Small parts
- // Seals
- // Sealing caps



ACCESSORIES

Double collars



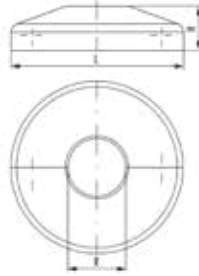
INFO

- // For double connection fittings
- // Can be cut for different pipe diameters
- // Flat design

TECHNICAL DATA

Material	ABS
Collar	Double

AM mm	L mm	B mm	H mm	R mm	Colour	Item-No
50	100	50	22	12, 15, 18, 20	chrome	2 612 5000 02
50	100	50	22	12, 15, 18, 20	white	2 612 5000 11
50	100	50	22	12, 15, 18, 20	anthracite	2 612 5070 16
50	100	50	22	14, 16, 17, 20	white	2 612 5001 11



INFO

- // For single connection fittings
- // Flat design

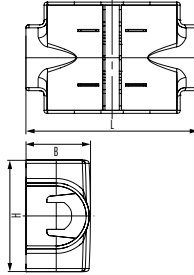
TECHNICAL DATA

Material	ABS
Collar	Single

L mm	B mm	H mm	R mm	Colour	Item-No
45	45	11.6	15	chrome	2 613 5000 02
45	45	11.6	15	white	2 613 5000 90
45	45	11.6	16	chrome	2 613 5001 02
45	45	11.6	16	white	2 613 5001 90

ACCESSORIES

Cover for Quadro valve terminal block



INFO

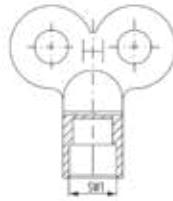
// Cover for Quadro valve terminal block

TECHNICAL DATA

Material

ABS

L mm	B mm	H mm	Colour	Item-No
114	42,6	73,5	chrome	2 219 8400 02
114	42,6	73,5	black	2 219 8400 05
114	42,6	73,5	white	2 219 8400 90



INFO

- // For all vent and drain valves with square SW 5
- // Square SW 5
- // With manufacturer's mark

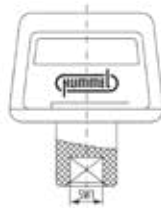
TECHNICAL DATA

Material	Zinc Die Cast
Colour	blue chromated

L mm	B mm	H mm	SW1 mm	Item-No
25	9	26	5.1	2 400 0500 05

ACCESSORIES

Air bleed key made of plastic



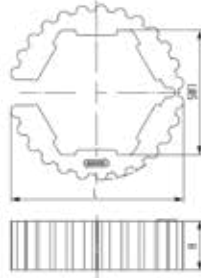
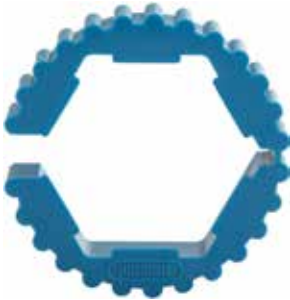
INFO

- // For all vent and drain valves with square SW 5
- // Square SW 5
- // With manufacturer's mark

TECHNICAL DATA

Material	Plastic
Colour	blue

L mm	B mm	H mm	SW1 mm	Item-No
24	10	27	5.1	2 410 0500 11



INFO

- // For all coated union nuts and compression fittings with SW 30
- // Installation aid for union nut SW 30 to retain, loosen, tighten
- // To protect against surface damage

TECHNICAL DATA

Material	Polyamide
Colour	blue

L mm	H mm	SW1 mm	Item-No
42.5	12	30	2 900 0380 03

ACCESSORIES

Venting hoses



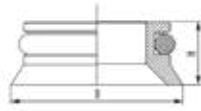
INFO

- // For vent and drain valves with hose transition
- // Construction length on request, min. 1m

TECHNICAL DATA

Material	PVC
Colour	transparent

B mm	H mm	Item-No
6	6	2 405 0400 19
14	14	2 405 0401 19



INFO

// For fittings, adapters and transitions in flat sealing design

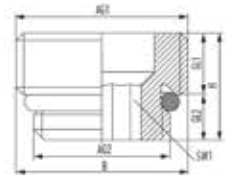
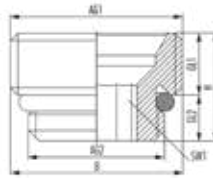
TECHNICAL DATA

Material	Polyamide
Material moulded seal	EPDM
Max. operating pressure	10 bar
Max. operating temperature	120 °C

AG1	L mm	B mm	H mm	Item-No
3/4	21	21	7.7	2.855.3401.00

ACCESSORIES

Connector nipple made of brass



left: 2 555 1234 00 | right: 2 558 1234 00

INFO

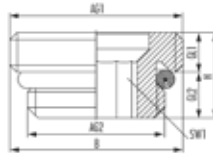
- // For connecting fittings to radiators
- // Flat sealing and conical sealing design
- // O-ring sealing

TECHNICAL DATA

Material	Brass blank
Material moulded seal	EPDM
Max. operating pressure	10 bar
Max. operating temperature	120 °C

AG1	AG2	L mm	B mm	H mm	GL1 mm	GL2 mm	SW1 mm	Version	Item-No
G 3/4	G 1/2	26.4	26.4	16.5	9.5	7	12	conical sealing	2 555 1234 00
G 3/4	G 1/2	26.4	26.4	16.5	9.5	7	12	flat sealing	2 558 1234 00

Connector nipple made of nickel plated brass



INFO

- // For connecting fittings to radiators
- // Flat sealing version
- // O-ring sealing

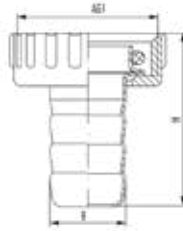
TECHNICAL DATA

Material	Nickel-plated brass
Material moulded seal	EPDM
Max. operating pressure	10 bar
Max. operating temperature	120 °C

AG1	AG2	L mm	B mm	H mm	GL1 mm	GL2 mm	SW1 mm	Item-No
G 3/4	G 1/2	26.4	26.4	13	6	7	12	2 558 1234 01

ACCESSORIES

Hose nozzle



INFO

- // For drain valves, FE ball valve and SFE valve
- // Suitable for hoses 1/2"
- // O-ring sealing

TECHNICAL DATA

Material	Brass blank
Material moulded seal	EPDM
Max. operating pressure	10 bar
Max. operating temperature	90 °C

AG1	L mm	B mm	H mm	SW1 mm	Item-No
G 3/4	26.4	14.4	33	30	2 730 3412 03



INFO

- // For drain valves, FE ball valve and SFE valve
- // Metallic design including seal
- // Flexible retaining loop as loss protection
- // Drip fuse

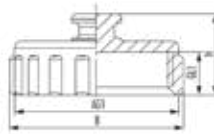
TECHNICAL DATA

Material	Nickel-plated brass
Material moulded seal	EPDM
Max. operating pressure	10 bar
Max. operating temperature	90 °C

AG1	L mm	B mm	H mm	SW1 mm	Item-No
G 3/4	100	26.4	26.4	30	2 810 0279 13

ACCESSORIES

Sealing cap



INFO

- // For HUMMEL FE ball valve and SFE valve
- // For sealing when the hose nozzle is not attached

TECHNICAL DATA

Material	Nickel-plated brass
Max. operating pressure	10 bar
Max. operating temperature	90 °C

AG1	L mm	B mm	H mm	SW1 mm	Item-No
G 3/4	26.4	26.4	13.7	30	2 947 0001 01

**INFO**

- // Suitable for cap G 3/4
- // High quality gasket

TECHNICAL DATA

Material	EPDM
Max. operating pressure	10 bar
Max. operating temperature	90 °C

AG1	L mm	B mm	H mm	Item-No
3/4	25	25	2	2 947 0002 11



ACCESSORIES, SPARE PARTS AND TOOLS

Spare parts



Flat sealing

Item-No DAD5-70B00A

for terminal block for one-pipe systems (until year of construction/catalog 2020), diverters, terminal block for two-pipe systems



O-Ring

Item-No TAX3-7G1620

for single connection, cam, Y-piece



Protective cap

Item-No DAK1-1MB30A

for thermostatic valve M30 x 1.5 mm



Valve insert

Item-No DAT1-CVS13A

for TBlock (until year of construction/catalog 2020), thermostatic valve (angled, corner or straight type), thermostatic valve Designtechnik (until year of construction/catalog 2020)



Valve insert

Item-No DAT1-CVS13B

for design fitting set no. 1 corner type and set no. 2 straight type (from year of construction/catalog 2021)



Valve insert

Item-No DAT1-CVS12B

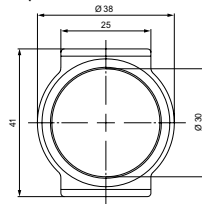
for thermostatic valve Designtechnik, flow and returnflow reversed (until year of construction/catalog 2020)



Valve insert

Item-No DAT1-HKV200

for heating distributors



Flow rate controller

Item-No DAT1-HKV100

for heating distributors





INDEX NUMERIC

Item-No	Description	Page	Item-No	Description	Page
2 105 1800 01	Air bleeder valve with key control R 1/8	117	2 256 8412 01	Single-connection fittings corner type with internal thread	77
2 110 1400 01	Air bleeder valves with key control	118	2 256 8413 01	Single-connection fittings corner type with internal thread	77
2 110 1800 01	Air bleeder valves with key control	118	2 256 8434 01	Single-connection fittings corner type	75
2 110 3801 01	Air bleeder valves with key control	118	2 256 8435 01	Single-connection fittings corner type	75
2 120 1400 01	Automatic ventings	122	2 257 0001 01	Mounting bridge	64
2 120 1800 01	Automatic ventings	122	2 257 0002 01	Diverters straight type	52
2 120 3800 01	Automatic ventings	122	2 257 0003 01	Diverters straight type	52
2 155 3434 01	Cone adapter	58	2 257 0004 01	Diverters straight type lockable	55
2 218 3435 01	Two-pipe terminal blocks straight type drainable	69	2 257 0005 01	Diverters straight type lockable	55
2 218 3436 01	Two-pipe terminal blocks straight type drainable	69	2 257 0008 01	Y pieces	63
2 218 8435 01	Two-pipe terminal blocks corner type drainable	70	2 257 0009 01	Y pieces	63
2 218 8436 01	Two-pipe terminal blocks corner type drainable	70	2 257 0010 01	Diverters corner type lockable	56
2 219 8412 02	Cover for Quadro valve terminal block, chrome	142	2 257 0011 01	Diverters corner type lockable	56
2 219 8412 05	Cover for Quadro valve terminal block, black	142	2 257 0021 01	Two-pipe terminal blocks straight type (quadruple connection)	71
2 219 8412 90	Cover for Quadro valve terminal block, white	142	2 257 0022 01	Two-pipe terminal blocks straight type (quadruple connection)	71
2 219 8412 02	Quadro valve terminal blocks	78, 92	2 257 0023 01	Diverters straight type lockable (one/two pipe)	53
2 219 8412 05	Quadro valve terminal blocks	78, 92	2 257 0024 01	Diverters straight type lockable (one/two pipe)	53
2 219 8412 90	Quadro valve terminal blocks	78, 92	2 257 0026 01	Diverters corner type lockable (one/two pipe)	54
2 248 3435 01	One-pipe terminal blocks straight type	72	2 257 0027 01	Diverters corner type lockable (one/two pipe)	54
2 248 3436 01	One-pipe terminal blocks straight type	72	2 300 5400 03	Radiator plug	131
2 248 8435 01	One-pipe terminal blocks corner type	73	2 301 5400 03	Radiator plug	131
2 248 8436 01	One-pipe terminal blocks corner type	73	2 350 5412 03	Radiator connection plug	130
2 249 3435 01	Two-pipe terminal blocks straight type	67	2 350 5434 03	Radiator connection plug	130
2 249 3436 01	Two-pipe terminal blocks straight type	67	2 350 5438 03	Radiator connection plug	130
2 249 8435 01	Two-pipe terminal blocks corner type	68	2 351 5410 03	Radiator connection plug	130
2 249 8436 01	Two-pipe terminal blocks corner type	68	2 351 5412 03	Radiator connection plug	130
2 253 3434 00	Coupling nipple	26, 42	2 351 5434 03	Radiator connection plug	130
2 253 3434 01	Coupling nipple	42	2 351 5438 03	Radiator connection plug	130
2 253 3490 01	Coupling angle	47	2 353 1234 01	Steel pipe adapters with Eurocone internal thread	30
2 253 3492 01	Coupling angle	47	2 353 3834 01	Steel pipe adapters with Eurocone internal thread	30
2 253 3495 00	Coupling T piece	27, 46	2 354 1234 01	Steel pipe adapter with Eurocone external thread	31
2 253 3495 01	Coupling T piece	46	2 354 3434 01	Steel pipe adapter with Eurocone external thread	31
2 254 1244 01	Reductions with internal thread	43	2 354 3834 01	Steel pipe adapter with Eurocone external thread	31
2 254 5834 01	Reductions with internal thread	43	2 355 1010 01	Steel pipe adapters with external thread	33
2 256 1234 01	Single-connection fittings straight type with internal thread	76	2 355 1212 01	Steel pipe adapters with external thread	33
2 256 1235 01	Single-connection fittings straight type with internal thread	76	2 355 3434 01	Steel pipe adapters with external thread	33
2 256 3434 01	Single-connection fittings straight type	74			
2 256 3435 01	Single-connection fittings straight type	74			

Item-No	Description	Page	Item-No	Description	Page
2355381201	Steel pipe adapters with external thread	33	2540380101	Outflow valves turnable with handwheel control	103
2355383801	Steel pipe adapters with external thread	33	2540380501	Outflow valves turnable with key control	102
2355545401	Steel pipe adapters with external thread	33	2549123801	Reduction	127
2355646401	Steel pipe adapters with external thread	33	2549341201	Reductions with external thread	44
2356121201	Steel pipe adapters with internal thread	32	2550101201	Connection plug	128
2356381201	Steel pipe adapters with internal thread	32	2550103401	Connection plug	128
2360540003	Radiator nipple	132	2550103801	Connection plug	128
2400000102	Air bleeder valves and sealing plugs	93	2550121201	Connection pieces	126
2400000190	Air bleeder valves and sealing plugs	93	2550123401	Connection pieces	126
2400050005	Air bleed key made of zinc die casting	143	2550123899	Connection plug	128
2400120002	Sealing plug made of brass	136	2550141801	Connection plug	128
2400120090	Sealing plug made of brass	136	2550341001	Connection pieces	126
2402000004	Flat sealing	133	2550341201	Connection plug	128
2405040019	Venting hoses	146	2550401201	Connection plug	128
2405040119	Venting hoses	146	2550411201	Connection plug	128
2410050011	Air bleed key made of plastic	144	2551123801	Connection plug reinforced	129
2421380001	Outflow valve	104	2552123401	Coupling angle with union nut	48
2432120002	Air bleeder valves Design	120	2554123400	Connector nipple	24, 40
2432120090	Air bleeder valves Design	120	2554123401	Connector nipple	40
2500100001	Radiator plug	134	2554223401	Reductions with external thread	44
2500140001	Radiator plug	134	2554343400	Connector nipple flat sealing	25, 41
2500180001	Radiator plug	134	2555123400	Connector nipple made of brass	148
2500340001	Radiator plug	134	2555343401	Extension piece	62
2500380001	Radiator plug	134	2556341201	Excenters for connection fittings	57
2506120000	Radiator plug	134	2556342201	Excenters for connection fittings	57
2506120001	Radiator plug	134	2556343401	Excenters for connection fittings	57
2506120102	Sealing plugs made of coated brass	95, 135	2558123400	Connector nipple made of brass	148
2506120190	Sealing plugs made of coated brass	95, 135	2558123401	Connector nipple made of nickel plated brass	149
2520120001	Automatic venting with o-ring	121	2559120001	Telescopic connections	60
2531120001	Outflow valves turnable with key control	102	2559340001	Telescopic connections	60
2531120501	Outflow valves turnable with key control	102	2559341201	Threaded pipe adapter	61
2531140001	Air bleeder valves with o-ring G 1/4	115	2559343401	Telescopic adapter	59
2531140501	Air bleeder valves with o-ring G 1/4	115	2559343501	Telescopic adapter	59
2532380001	Air bleeder valves turnable with o-ring	114	2559343601	Telescopic adapter	59
2535180001	Air bleeder valves turnable with o-ring G 1/8	116	2559343801	Threaded pipe adapter	61
2535180501	Air bleeder valves turnable with o-ring G 1/8	116	2559380001	Telescopic connections	60
2536120102	Air bleeder valves turnable with o-ring G 1/2	94, 119	2580120101	Filling/drainig plug	109
2536120190	Air bleeder valves turnable with o-ring G 1/2	94, 119	2584100100	Filling and emptying tool	110
2537120001	Air bleeder valves turnable with o-ring	114	2612500002	Double collars	97, 140
2537120501	Air bleeder valves turnable with o-ring	114	2612500011	Double collars	140
2537380501	Air bleeder valves turnable with o-ring	114	2612500090	Double collars	97
2540140001	Outflow valves turnable with handwheel control	103	2612500111	Double collars	140
2540380001	Outflow valves turnable with key control	102	2612507016	Double collars	140
			2613500002	Single collars	98, 141
			2613500090	Single collars	98, 141
			2613500102	Single collars	98, 141

INDEX NUMERIC

Item-No	Description	Page	Item-No	Description	Page
2 613 5001 90	Single collars	98, 141	2 862 0006 01	Compression fittings MKV-K sets	23, 39
2 700 1000 01	SFE valves with handwheel control black	106	2 862 0007 01	Compression fittings MKV-K sets	23, 39
2 700 1200 00	SFE valves with handwheel control	107	2 862 0008 01	Compression fittings MKV-K sets	23, 39
2 700 1200 01	SFE valves with handwheel control black	106	2 862 0009 01	Compression fittings MKV-K sets	23, 39
2 700 1400 00	SFE valves with handwheel control	107	2 862 0010 01	Compression fittings MKV-K sets	23, 39
2 700 3400 01	SFE valves with handwheel control black	106	2 862 0011 01	Compression fittings MKV-K sets	23, 39
2 700 3800 00	SFE valves with handwheel control	107	2 862 0012 01	Compression fittings MKV-K sets	23, 39
2 710 1200 00	SFE valve	108	2 862 0013 01	Compression fittings MKV-K sets	23, 39
2 730 3412 03	Hose nozzle	150	2 862 0014 01	Compression fittings MKV-K sets	23, 39
2 755 1010 00	Drinking water Steel pipe adapters with external thread	18, 34	2 862 0015 01	Compression fittings MKV-K sets	23, 39
2 755 1212 00	Drinking water Steel pipe adapters with external thread	18, 34	2 862 0016 01	Compression fittings MKV-K sets	23, 39
2 755 3434 00	Drinking water Steel pipe adapters with external thread	18, 34	2 862 0017 01	Compression fittings MKV-K sets	23, 39
2 755 5454 00	Drinking water Steel pipe adapters with external thread	18, 34	2 862 0018 01	Compression fittings MKV-K sets	23, 39
2 755 6464 00	Drinking water Steel pipe adapters with external thread	18, 34	2 862 0019 01	Compression fittings MKV-K sets	23, 39
2 810 0279 13	Sealing cap with strap	151	2 862 0020 01	Compression fittings MKV-K sets	23, 39
2 810 0320 13	Emergency service case	13	2 862 0021 01	Compression fittings MKV-K sets	23, 39
2 810 0320 20	Steel pipe adapter case	15	2 862 0022 01	Compression fittings MKV-K sets	23, 39
2 810 0381 02	Set 1 corner type	92	2 862 0023 01	Compression fittings MKV-K sets	23, 39
2 810 0381 90	Set 1 corner type	92	2 862 0024 01	Compression fittings MKV-K sets	23, 39
2 810 0382 02	Set 2 straight type	93	2 862 0025 01	Compression fittings MKV-K sets	23, 39
2 810 0382 90	Set 2 straight type	93	2 862 0026 01	Compression fittings MKV-K sets	23, 39
2 823 3434 01	Flexible device connections	65	2 862 0027 01	Compression fittings MKV-K sets	23, 39
2 826 1238 341	Flexible radiator connections with reduction	66	2 862 0028 01	Compression fittings MKV-K sets	23, 39
2 827 1238 341	Flexible radiator connections with reduction	66	2 862 1202 01	Compression fittings MKV-K	21, 37
2 828 1238 341	Flexible radiator connections with reduction	66	2 862 1402 01	Compression fittings MKV-K	21, 37
2 829 1238 341	Flexible radiator connections with reduction	66	2 862 1602 01	Compression fittings MKV-K	21, 37
2 830 3434 01	Flexible device connections	65	2 862 1618 01	Compression fittings MKV-K	21, 37
2 855 0001 01	Compression fittings MKV-M	20, 36	2 862 1622 01	Compression fittings MKV-K	21, 37
2 855 0002 01	Compression fittings MKV-M	20, 36	2 862 1702 01	Compression fittings MKV-K	21, 37
2 855 0003 01	Compression fittings MKV-M	20, 36	2 862 1725 01	Compression fittings MKV-K	21, 37
2 855 0015 01	Compression fittings SpeedFIX	19, 35	2 862 1802 01	Compression fittings MKV-K	21, 37
2 855 0015 02	Compression fittings SpeedFIX	19, 35, 96	2 862 2002 01	Compression fittings MKV-K	21, 37
2 855 0015 90	Compression fittings SpeedFIX	19, 35, 96	2 862 2025 01	Compression fittings MKV-K	21, 37
2 855 3401 00	Cone inserts	147	2 862 2029 01	Compression fittings MKV-K	21, 37
2 859 3435 01	Telescopic adapter	59	2 900 0380 03	Mounting help	145
2 862 0001 01	Compression fittings MKV-K sets	23, 39	2 904 1200 01	Thermostatic valves corner type (internal thread)	82
2 862 0002 01	Compression fittings MKV-K sets	23, 39	2 904 1234 01	Thermostatic valve corner type (Eurocone)	80
2 862 0003 01	Compression fittings MKV-K sets	23, 39	2 904 3400 01	Thermostatic valves corner type (internal thread)	82
2 862 0004 01	Compression fittings MKV-K sets	23, 39	2 904 3800 01	Thermostatic valves corner type (internal thread)	82
2 862 0005 01	Compression fittings MKV-K sets	23, 39	2 905 1200 01	Threaded-joint radiator returns corner type (internal thread)	88
			2 905 3400 01	Threaded-joint radiator returns corner type (internal thread)	88
			2 905 3800 01	Threaded-joint radiator returns corner type (internal thread)	88

Item-No	Description	Page
2 907 0001 02	Thermostatic heads M30 x 1,5	89
2 907 0001 90	Thermostatic heads M30 x 1,5	89
2 907 3018 02	Thermostatic heads M30 x 1,5 with liquid sensor	90
2 907 3018 90	Thermostatic heads M30 x 1,5 with liquid sensor	90
2 907 3118 02	Thermostatic heads clamp connection „D“	91
2 907 3118 90	Thermostatic heads clamp connection „D“	91
2 908 3412 01	Threaded joint connector	45
2 914 1200 01	Thermostatic valves straight type (internal thread)	81
2 914 1234 01	Thermostatic valve straight type (Eurocone)	79
2 914 3400 01	Thermostatic valves straight type (internal thread)	81
2 914 3800 01	Thermostatic valves straight type (internal thread)	81
2 915 1200 01	Threaded-joint radiator returns straight type (internal thread)	87
2 915 3400 01	Threaded-joint radiator returns straight type (internal thread)	87
2 915 3800 01	Threaded-joint radiator returns straight type (internal thread)	87
2 920 1234 01	Threaded-joint radiator return straight type (Eurocone)	85
2 922 1234 01	Thermostatic valve angle corner type right	83
2 923 1234 01	Thermostatic valve angle corner type left	84
2 925 1234 01	Threaded-joint radiator return corner type (Eurocone)	86
2 947 0001 01	Sealing cap	152
2 947 0002 11	Seal für sealing cap	153
2 947 3400 01	FE valves	105
2 947 3800 01	FE valves	105
2 948 1200 01	FE valves	105

INDEX ALPHABETICAL

Item-No	Description	Page	Item-No	Description	Page
2 410 0500 11	Air bleed key made of plastic	146	2 862 0015 01	Compression fittings MKV-K sets	23
2 400 0500 05	Air bleed key made of zinc die casting	145	2 862 0016 01	Compression fittings MKV-K sets	23
2 105 1800 01	Air bleeder valve with key control R 1/8	119	2 862 0017 01	Compression fittings MKV-K sets	23
2 400 0001 02	Air bleeder valves and sealing plugs	95	2 862 0018 01	Compression fittings MKV-K sets	23
2 400 0001 90	Air bleeder valves and sealing plugs	95	2 862 0019 01	Compression fittings MKV-K sets	23
2 432 1200 02	Air bleeder valves Design	122	2 862 0020 01	Compression fittings MKV-K sets	23
2 432 1200 90	Air bleeder valves Design	122	2 862 0021 01	Compression fittings MKV-K sets	23
2 532 3800 01	Air bleeder valves turnable with o-ring	116	2 862 0022 01	Compression fittings MKV-K sets	23
2 537 1200 01	Air bleeder valves turnable with o-ring	116	2 862 0023 01	Compression fittings MKV-K sets	23
2 536 1201 02	Air bleeder valves turnable with o-ring G 1/2	96	2 862 0024 01	Compression fittings MKV-K sets	23
2 536 1201 90	Air bleeder valves turnable with o-ring G 1/2	96	2 862 0025 01	Compression fittings MKV-K sets	23
2 535 1800 01	Air bleeder valves turnable with o-ring G 1/8	118	2 862 0026 01	Compression fittings MKV-K sets	23
2 110 1400 01	Air bleeder valves with key control	120	2 862 0027 01	Compression fittings MKV-K sets	23
2 110 1800 01	Air bleeder valves with key control	120	2 862 0028 01	Compression fittings MKV-K sets	23
2 110 3801 01	Air bleeder valves with key control	120	2 855 0001 01	Compression fittings MKV-M	20
2 531 1400 01	Air bleeder valves with o-ring G 1/4	117	2 855 0002 01	Compression fittings MKV-M	20
2 520 1200 01	Automatic venting with o-ring	123	2 855 0003 01	Compression fittings MKV-M	20
2 120 1400 01	Automatic ventings	124	2 855 0015 01	Compression fittings SpeedFIX	19
2 120 1800 01	Automatic ventings	124	2 855 0015 02	Compression fittings SpeedFIX	19
2 120 3800 01	Automatic ventings	124	2 855 0015 90	Compression fittings SpeedFIX	19
2 862 1202 01	Compression fittings MKV-K	21	2 155 3434 01	Cone adapter	58
2 862 1402 01	Compression fittings MKV-K	21	2 855 3401 00	Cone inserts	149
2 862 1602 01	Compression fittings MKV-K	21	2 550 1212 01	Connection pieces	128
2 862 1618 01	Compression fittings MKV-K	21	2 550 1234 01	Connection pieces	128
2 862 1622 01	Compression fittings MKV-K	21	2 550 3410 01	Connection pieces	128
2 862 1702 01	Compression fittings MKV-K	21	2 550 1012 01	Connection plug	130
2 862 1725 01	Compression fittings MKV-K	21	2 550 1034 01	Connection plug	130
2 862 1802 01	Compression fittings MKV-K	21	2 550 1038 01	Connection plug	130
2 862 2002 01	Compression fittings MKV-K	21	2 550 1238 99	Connection plug	130
2 862 2025 01	Compression fittings MKV-K	21	2 550 1418 01	Connection plug	130
2 862 2029 01	Compression fittings MKV-K	21	2 550 3412 01	Connection plug	130
2 862 0001 01	Compression fittings MKV-K sets	23	2 550 4012 01	Connection plug	130
2 862 0002 01	Compression fittings MKV-K sets	23	2 550 4112 01	Connection plug	130
2 862 0003 01	Compression fittings MKV-K sets	23	2 551 1238 01	Connection plug reinforced	131
2 862 0004 01	Compression fittings MKV-K sets	23	2 554 1234 00	Connector nipple	24
2 862 0005 01	Compression fittings MKV-K sets	23	2 554 1234 01	Connector nipple	40
2 862 0006 01	Compression fittings MKV-K sets	23	2 554 3434 00	Connector nipple flat sealing	25
2 862 0007 01	Compression fittings MKV-K sets	23	2 555 1234 00	Connector nipple made of brass	150
2 862 0008 01	Compression fittings MKV-K sets	23	2 558 1234 00	Connector nipple made of brass	150
2 862 0009 01	Compression fittings MKV-K sets	23	2 558 1234 01	Connector nipple made of nickel plated brass	151
2 862 0010 01	Compression fittings MKV-K sets	23	2 253 3490 01	Coupling angle	47
2 862 0011 01	Compression fittings MKV-K sets	23	2 253 3492 01	Coupling angle	47
2 862 0012 01	Compression fittings MKV-K sets	23	2 552 1234 01	Coupling angle with union nut	48
2 862 0013 01	Compression fittings MKV-K sets	23	2 253 3434 00	Coupling nipple	26
2 862 0014 01	Compression fittings MKV-K sets	23	2 253 3434 01	Coupling nipple	42
			2 253 3495 00	Coupling T piece	27
			2 253 3495 01	Coupling T piece	46

INDEX ALPHABETICAL

Item-No	Description	Page	Item-No	Description	Page
2219 8412 02	Cover for Quadro valve terminal block, chrome	142	2826 1238 341	Flexible radiator connections with reduction	66
2219 8412 05	Cover for Quadro valve terminal block, black	142	2827 1238 341	Flexible radiator connections with reduction	66
2219 8412 90	Cover for Quadro valve terminal block, white	142	2828 1238 341	Flexible radiator connections with reduction	66
2257 0010 01	Diverters corner type lockable	56	2829 1238 341	Flexible radiator connections with reduction	66
2257 0011 01	Diverters corner type lockable	56	2730 3412 03	Hose nozzle	152
2257 0026 01	Diverters corner type lockable (one/two pipe)	54	2257 0001 01	Mounting bridge	64
2257 0027 01	Diverters corner type lockable (one/two pipe)	54	2900 0380 03	Mounting help	147
2257 0002 01	Diverters straight type	52	2248 8435 01	One-pipe terminal blocks corner type	73
2257 0003 01	Diverters straight type	52	2248 8436 01	One-pipe terminal blocks corner type	73
2257 0004 01	Diverters straight type lockable	55	2248 3435 01	One-pipe terminal blocks straight type	72
2257 0005 01	Diverters straight type lockable	55	2248 3436 01	One-pipe terminal blocks straight type	72
2257 0023 01	Diverters straight type lockable (one/two pipe)	53	2421 3800 01	Outflow valve	106
2257 0024 01	Diverters straight type lockable (one/two pipe)	53	2540 1400 01	Outflow valves turnable with handwheel control	105
2612 5000 02	Double collars	99	2540 3801 01	Outflow valves turnable with handwheel control	105
2612 5000 11	Double collars	142	2531 1200 01	Outflow valves turnable with key control	104
2612 5000 90	Double collars	99	2540 3800 01	Outflow valves turnable with key control	104
2612 5001 11	Double collars	142	2219 8412 02	Quadro valve terminal blocks	78
2612 5070 16	Double collars	142	2219 8412 90	Quadro valve terminal blocks	78
2755 1010 00	Drinking water Steel pipe adapters with external thread	18	2350 5412 03	Radiator connection plug	132
2755 1212 00	Drinking water Steel pipe adapters with external thread	18	2350 5434 03	Radiator connection plug	132
2755 3434 00	Drinking water Steel pipe adapters with external thread	18	2350 5438 03	Radiator connection plug	132
2755 5454 00	Drinking water Steel pipe adapters with external thread	18	2351 5410 03	Radiator connection plug	132
2755 6464 00	Drinking water Steel pipe adapters with external thread	18	2351 5412 03	Radiator connection plug	132
2810 0320 13	Emergency service case	13	2351 5434 03	Radiator connection plug	132
2556 3412 01	Excenters for connection fittings	57	2351 5438 03	Radiator connection plug	132
2556 3422 01	Excenters for connection fittings	57	2360 5400 03	Radiator nipple	134
2556 3434 01	Excenters for connection fittings	57	2300 5400 03	Radiator plug	133, 136
2555 3434 01	Extension piece	62	2301 5400 03	Radiator plug	133, 136
2947 3400 01	FE valves	107	2500 1000 01	Radiator plug	133, 136
2947 3800 01	FE valves	107	2500 1400 01	Radiator plug	133, 136
2948 1200 01	FE valves	107	2500 1800 01	Radiator plug	133, 136
2584 1001 00	Filling and emptying tool	112	2500 3400 01	Radiator plug	133, 136
2580 1201 01	Filling/drainig plug	111	2500 3800 01	Radiator plug	133, 136
2402 0000 04	Flat sealing	135	2506 1200 00	Radiator plug	133, 136
2823 3434 01	Flexible device connections	65	2506 1200 01	Radiator plug	133, 136
2830 3434 01	Flexible device connections	65	2549 1238 01	Reduction	129
			2549 3412 01	Reductions with external thread	44
			2554 2234 01	Reductions with external thread	44
			2254 1244 01	Reductions with internal thread	43
			2254 5834 01	Reductions with internal thread	43
			2947 0002 11	Seal für sealing cap	155
			2947 0001 01	Sealing cap	154

INDEX ALPHABETICAL

Item-No	Description	Page	Item-No	Description	Page
2 810 0279 13	Sealing cap with strap	153	2 355 3838 01	Steel pipe adapters with external thread	33
2 400 1200 02	Sealing plug made of brass	138	2 355 5454 01	Steel pipe adapters with external thread	33
2 400 1200 90	Sealing plug made of brass	138	2 355 6464 01	Steel pipe adapters with external thread	33
2 506 1201 02	Sealing plug made of coated brass	137	2 356 1212 01	Steel pipe adapters with internal thread	32
2 506 1201 90	Sealing plug made of coated brass	137	2 356 3812 01	Steel pipe adapters with internal thread	32
2 506 1201 02	Sealing plugs made of coated brass	97	2 559 3434 01	Telescopic adapter	59
2 506 1201 90	Sealing plugs made of coated brass	97	2 559 3435 01	Telescopic adapter	59
2 810 0381 02	Set 1 corner type	92	2 559 3436 01	Telescopic adapter	59
2 810 0381 90	Set 1 corner type	92	2 859 3435 01	Telescopic adapter	59
2 810 0382 02	Set 2 straight type	93	2 559 1200 01	Telescopic connections	60
2 810 0382 90	Set 2 straight type	93	2 559 3400 01	Telescopic connections	60
2 710 1200 00	SFE valve	110	2 559 3800 01	Telescopic connections	60
2 700 1200 00	SFE valves with handwheel control	109	2 907 3118 02	Thermostatic heads clamp connection „D“	91
2 700 1400 00	SFE valves with handwheel control	109	2 907 3118 90	Thermostatic heads clamp connection „D“	91
2 700 3800 00	SFE valves with handwheel control	109	2 907 0001 02	Thermostatic heads M30 x 1,5	89
2 700 1000 01	SFE valves with handwheel control black	108	2 907 0001 90	Thermostatic heads M30 x 1,5	89
2 700 1200 01	SFE valves with handwheel control black	108	2 907 3018 02	Thermostatic heads M30 x 1,5 with liquid sensor	90
2 700 3400 01	SFE valves with handwheel control black	108	2 907 3018 90	Thermostatic heads M30 x 1,5 with liquid sensor	90
2 613 5000 02	Single collars	100	2 923 1234 01	Thermostatic valve angle corner type left	84
2 613 5000 90	Single collars	100	2 922 1234 01	Thermostatic valve angle corner type right	83
2 613 5001 02	Single collars	100	2 904 1234 01	Thermostatic valve corner type (Eurocone)	80
2 613 5001 90	Single collars	100	2 914 1234 01	Thermostatic valve straight type (Eurocone)	79
2 256 8434 01	Single-connection fittings corner type	75	2 904 1200 01	Thermostatic valves corner type (internal thread)	82
2 256 8435 01	Single-connection fittings corner type	75	2 904 3400 01	Thermostatic valves corner type (internal thread)	82
2 256 8412 01	Single-connection fittings corner type with internal thread	77	2 904 3800 01	Thermostatic valves corner type (internal thread)	82
2 256 8413 01	Single-connection fittings corner type with internal thread	77	2 914 1200 01	Thermostatic valves straight type (internal thread)	81
2 256 3434 01	Single-connection fittings straight type	74	2 914 3400 01	Thermostatic valves straight type (internal thread)	81
2 256 3435 01	Single-connection fittings straight type	74	2 914 3800 01	Thermostatic valves straight type (internal thread)	81
2 256 1234 01	Single-connection fittings straight type with internal thread	76	2 908 3412 01	Threaded joint connector	45
2 256 1235 01	Single-connection fittings straight type with internal thread	76	2 559 3412 01	Threaded pipe adapter	61
2 810 0320 20	Steel pipe adapter case	15	2 559 3438 01	Threaded pipe adapter	61
2 354 1234 01	Steel pipe adapter with Eurocone external thread	31	2 925 1234 01	Threaded-joint radiator return corner type (Eurocone)	86
2 354 3434 01	Steel pipe adapter with Eurocone external thread	31	2 920 1234 01	Threaded-joint radiator return straight type (Eurocone)	85
2 354 3834 01	Steel pipe adapter with Eurocone external thread	31	2 905 1200 01	Threaded-joint radiator returns corner type (internal thread)	88
2 353 1234 01	Steel pipe adapters with Eurocone internal thread	30	2 905 3400 01	Threaded-joint radiator returns corner type (internal thread)	88
2 353 3834 01	Steel pipe adapters with Eurocone internal thread	30			
2 355 1010 01	Steel pipe adapters with external thread	33			
2 355 1212 01	Steel pipe adapters with external thread	33			
2 355 3434 01	Steel pipe adapters with external thread	33			
2 355 3812 01	Steel pipe adapters with external thread	33			

Item-No	Description	Page
2 905 3800 01	Threaded-joint radiator returns corner type (internal thread)	88
2 915 1200 01	Threaded-joint radiator returns straight type (internal thread)	87
2 915 3400 01	Threaded-joint radiator returns straight type (internal thread)	87
2 915 3800 01	Threaded-joint radiator returns straight type (internal thread)	87
2 249 8435 01	Two-pipe terminal blocks corner type	68
2 249 8436 01	Two-pipe terminal blocks corner type	68
2 218 8435 01	Two-pipe terminal blocks corner type drainable	70
2 218 8436 01	Two-pipe terminal blocks corner type drainable	70
2 249 3435 01	Two-pipe terminal blocks straight type	67
2 249 3436 01	Two-pipe terminal blocks straight type	67
2 257 0021 01	Two-pipe terminal blocks straight type (quadruple connection)	71
2 257 0022 01	Two-pipe terminal blocks straight type (quadruple connection)	71
2 218 3435 01	Two-pipe terminal blocks straight type drainable	69
2 218 3436 01	Two-pipe terminal blocks straight type drainable	69
2 405 0400 19	Venting hoses	148
2 405 0401 19	Venting hoses	148
2 257 0008 01	Y pieces	63
2 257 0009 01	Y pieces	63

TECHNICAL INFORMATION

General technical information

Heating parts for drinking water systems are particularly marked in this catalog. Our products are suitable for heating systems of buildings, regardless of the type of heating.

To avoid damage and scale formation, the composition of the heat transfer medium should conform to VDI (The Association of German Engineers) guideline 2035. For industry and district heating plants, the AGFW work sheet FW 510 is to be observed. Mineral oils contained in the heat-transfer medium (alternatively, Neo-Fermit and other lubricants of the type that contain mineral oil) cause swelling and, in most cases, the breakdown of EPDM sealings.

The threads of HUMMEL threaded joints are, unless stated otherwise, manufactured according to DIN EN ISO 228-1. We reserve the right to make technical changes, as well as changes to dimensions and design.

DIN EN 16313

HUMMEL single and double connection fittings comply with required figures of DIN EN 16313. HUMMEL compression fittings also comply with the functional dimensions of DIN EN 16313. By combining a HUMMEL compression fitting with a part from other manufacturers it has to be ensured that this part has been manufactured in compliance with DIN EN 16313.

Assembly instructions

Our assembly instructions are enclosed with our products or available online in our technical center at www.hummel.com. For further requests a personal contact person will be happy to provide you with detailed information.

DIN ISO 9001

HUMMEL supplies certified quality according to DIN ISO 9001 and sets with this high demands towards the own products, as well as towards the suppliers. Only standardized and certified copper alloys of well-known European semi-finished product plants getting used in production.



to the pressure loss diagrams

SOLUTIONS FOR HEATING AND DRINKING WATER SYSTEMS

Solutions for drinking water systems

Steel pipe adapters, compression fittings, connection fittings, nipples



Connection fittings

Reductions, coupling angle, steel pipe adapters, compression fittings



Radiator connections

Diverters, flexible connections, connection fittings, thermostatic valves and heads



Draining and Venting

Air vents, automatic venting, draining valves, inflow and outflow apparatus



HUMMEL AG

Lise-Meitner-Straße 2
79211 Denzlingen
Germany

Tel. +49 (0)76 66 / 9 11 10 - 400
Fax +49 (0)76 66 / 9 11 10 - 9420
E-Mail plh@hummel.com

www.hummel.com